

Product datasheet for **TP312499L**

FGL1 (NM_004467) Human Recombinant Protein

Product data:

Product Type:	Recombinant Proteins
Description:	Recombinant protein of human fibrinogen-like 1 (FGL1), transcript variant 1, 1 mg
Species:	Human
Expression Host:	HEK293T
Expression cDNA Clone or AA Sequence:	>RC212499 protein sequence Red =Cloning site Green =Tags(s) MAKVFSFILVTTALTMGREISALEDCAQEQMRLRAQVRLLETRVKQQQVKIKQLLQENEVQFLDKGDENT VIDLGSKRQYADCSEIFNDGYKLSGFYKIKPLQSPAEFVYCDMSDGGGWTVIQRSDGSENFNRGWKDY ENGFQNFVQKHGEYWLGNKNLHFLTQEDYTLKIDLADFEKNSRYAQYKNFKVGDENFYELNIGEYSGT AGDSLGNFHPVQWWASHQRMKFSTWDRDHDNYEGNCAEEDQSGWWFNRCHSANLNGVYYSGPYAKTD NGIVWYTWHGWWYSLKSVVMKIRPNDIFIPNVI TRTRPLEQKLISEEDLAANDILDYKDDDDKV
Tag:	C-Myc/DDK
Predicted MW:	34 kDa
Concentration:	>0.05 µg/µL as determined by microplate BCA method
Purity:	> 80% as determined by SDS-PAGE and Coomassie blue staining
Buffer:	25 mM Tris-HCl, 100 mM glycine, pH 7.3, 10% glycerol
Preparation:	Recombinant protein was captured through anti-DDK affinity column followed by conventional chromatography steps.
Note:	For testing in cell culture applications, please filter before use. Note that you may experience some loss of protein during the filtration process.
Storage:	Store at -80°C.
Stability:	Stable for 12 months from the date of receipt of the product under proper storage and handling conditions. Avoid repeated freeze-thaw cycles.
RefSeq:	<u>NP_004458</u>
Locus ID:	2267



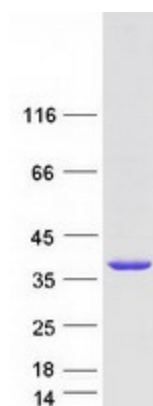
[View online »](#)

UniProt ID: [Q08830](#)
RefSeq Size: 1285
Cytogenetics: 8p22
RefSeq ORF: 936
Synonyms: HFREP1; HP-041; HPS; LFIRE-1; LFIRE1

Summary: Fibrinogen-like 1 is a member of the fibrinogen family. This protein is homologous to the carboxy terminus of the fibrinogen beta- and gamma- subunits which contains the four conserved cysteines of fibrinogens and fibrinogen related proteins. However, this protein lacks the platelet-binding site, cross-linking region and a thrombin-sensitive site which are necessary for fibrin clot formation. This protein may play a role in the development of hepatocellular carcinomas. Four alternatively spliced transcript variants encoding the same protein exist for this gene. [provided by RefSeq, Jul 2008]

Protein Families: Druggable Genome, Secreted Protein

Product images:



Coomassie blue staining of purified FGL1 protein (Cat# [TP312499]). The protein was produced from HEK293T cells transfected with FGL1 cDNA clone (Cat# [RC212499]) using MegaTran 2.0 (Cat# [TT210002]).