

Product datasheet for **TP312498L**

Lymphocyte Antigen 6 Complex (LY6K) (NM_017527) Human Recombinant Protein

Product data:

Product Type: Recombinant Proteins

Description: Recombinant protein of human lymphocyte antigen 6 complex, locus K (LY6K), 1 mg

Species: Human

Expression Host: HEK293T

Expression cDNA Clone >RC212498 protein sequence

or AA Sequence: **Red**=Cloning site **Green**=Tags(s)

MRLQRPRQAPAGGRRAPRGGRGSPYRDPGRGARRLRRFQKGGEGAPRADPPWAPLGTMALLALLLVVAL
PRVWTDANLTARQRPEDSQRTDEGDNRVWCHVCERENTFECQNPRRCKWTEPYCVIAAVKIFPRFFMVA
KQCSAGCAAMERPKPEEKRFLLLEEMPFYLYKCKKIRYCNLEGPPINSSVFKEYAGSMGESCGLLWLAAIL
LLASIAAGLSLS

TRTRPLEQKLISEEDLAANDILDYKDDDDKV

Tag: C-Myc/DDK

Predicted MW: 18.5 kDa

Concentration: >0.05 µg/µL as determined by microplate BCA method

Purity: > 80% as determined by SDS-PAGE and Coomassie blue staining

Buffer: 25 mM Tris-HCl, 100 mM glycine, pH 7.3, 10% glycerol

Preparation: Recombinant protein was captured through anti-DDK affinity column followed by conventional chromatography steps.

Note: For testing in cell culture applications, please filter before use. Note that you may experience some loss of protein during the filtration process.

Storage: Store at -80°C.

Stability: Stable for 12 months from the date of receipt of the product under proper storage and handling conditions. Avoid repeated freeze-thaw cycles.

RefSeq: [NP_059997](#)

Locus ID: 54742

UniProt ID: [Q17RY6](#)



[View online >](#)

RefSeq Size: 1747

Cytogenetics: 8q24.3

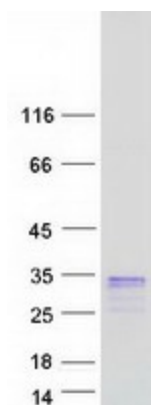
RefSeq ORF: 669

Synonyms: CT97; HSJ001348; ly-6K; URLC10

Summary: Required for sperm migration into the oviduct and male fertility by controlling binding of sperm to zona pellucida (By similarity). May play a role in cell growth (PubMed:18089789).
[UniProtKB/Swiss-Prot Function]

Protein Families: Transmembrane

Product images:



Coomassie blue staining of purified LY6K protein (Cat# [TP312498]). The protein was produced from HEK293T cells transfected with LY6K cDNA clone (Cat# [RC212498]) using MegaTran 2.0 (Cat# [TT210002]).