

Product datasheet for **TP312495L**

SFTPA2 (NM_001098668) Human Recombinant Protein

Product data:

Product Type: Recombinant Proteins

Description: Purified recombinant protein of Homo sapiens surfactant protein A2 (SFTPA2), 1 mg

Species: Human

Expression Host: HEK293T

Expression cDNA Clone >RC212495 representing NM_001098668

or AA Sequence: **Red**=Cloning site **Green**=Tags(s)

MWLCPLALTLILMAASGAACEVKDVCVGSPIGTPGSHGLPGRDGRDGVKGDPPGPPMGPPGETPCPP
GNNGLPGAPGVPERGEKGEAGERPPGLPAHLDEELQATLHDFRHQILQTRGALS LQGSIMTVGEKVFS
SNGQSITFDAIQEACARAGGRIAVPRNPEENEAIASFVKYNTYAYVGLTEGSPSPGDFRYS DGTVPVNYTN
WYRGEPAGRGKEQC VEMYTDGQW NDRNCLYSRLTICEF

TRTRPLEQKLISEEDLAANDILDYKDDDDKV

Tag: C-Myc/DDK

Predicted MW: 26 kDa

Concentration: >0.05 µg/µL as determined by microplate BCA method

Purity: > 80% as determined by SDS-PAGE and Coomassie blue staining

Buffer: 25 mM Tris-HCl, 100 mM glycine, pH 7.3, 10% glycerol

Preparation: Recombinant protein was captured through anti-DDK affinity column followed by conventional chromatography steps.

Note: For testing in cell culture applications, please filter before use. Note that you may experience some loss of protein during the filtration process.

Storage: Store at -80°C.

Stability: Stable for 12 months from the date of receipt of the product under proper storage and handling conditions. Avoid repeated freeze-thaw cycles.

RefSeq: [NP_001092138](#)

Locus ID: 729238

UniProt ID: [Q8IWL1](#)



[View online »](#)

RefSeq Size: 2189

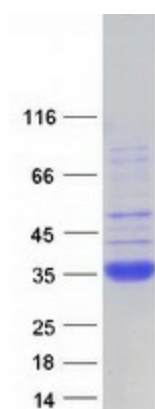
Cytogenetics: 10q22.3

RefSeq ORF: 744

Synonyms: COLEC5; PSAP; PSP-A; PSPA; SFTP1; SFTPA2B; SP-2A; SP-A; SPA2; SPAII

Summary: This gene is one of several genes encoding pulmonary-surfactant associated proteins (SFTPA) located on chromosome 10. Mutations in this gene and a highly similar gene located nearby, which affect the highly conserved carbohydrate recognition domain, are associated with idiopathic pulmonary fibrosis. The current version of the assembly displays only a single centromeric SFTPA gene pair rather than the two gene pairs shown in the previous assembly which were thought to have resulted from a duplication. [provided by RefSeq, Sep 2009]

Product images:



Coomassie blue staining of purified SFTPA2 protein (Cat# [TP312495]). The protein was produced from HEK293T cells transfected with SFTPA2 cDNA clone (Cat# [RC212495]) using MegaTran 2.0 (Cat# [TT210002]).