

Product datasheet for **TP312495**

SFTPA2 (NM_001098668) Human Recombinant Protein

Product data:

Product Type:	Recombinant Proteins
Description:	Purified recombinant protein of Homo sapiens surfactant protein A2 (SFTPA2), 20 µg
Species:	Human
Expression Host:	HEK293T
Expression cDNA Clone or AA Sequence:	>RC212495 representing NM_001098668 Red =Cloning site Green =Tags(s)
	 MWLCLPLALTLILMAASGAACEVKDVCVGSPIGTPGSHGLPGRDGRDGVKGDPPGPPMGPPGETPCPP GNNGLPGAPGVPERGEKGEAGERGPPGLPAHLDEELQATLHDFRHQILQTRGALS LQGSIMTVGEKVFS SNGQSITFDAIQEACARAGGRIAVPRNPEENEAIASFVKYNTYAYVGLTEGSPSGDFRYS DGTVPVNYTN WYRGEPAGRGKEQC VEMYTDGQW NDRNCLYSRLTICEF TRTRPLEQKLISEEDLAANDILDYKDDDDKV
Tag:	C-Myc/DDK
Predicted MW:	26 kDa
Concentration:	>0.05 µg/µL as determined by microplate BCA method
Purity:	> 80% as determined by SDS-PAGE and Coomassie blue staining
Buffer:	25 mM Tris-HCl, 100 mM glycine, pH 7.3, 10% glycerol
Preparation:	Recombinant protein was captured through anti-DDK affinity column followed by conventional chromatography steps.
Note:	For testing in cell culture applications, please filter before use. Note that you may experience some loss of protein during the filtration process.
Storage:	Store at -80°C.
Stability:	Stable for 12 months from the date of receipt of the product under proper storage and handling conditions. Avoid repeated freeze-thaw cycles.
RefSeq:	NP_001092138
Locus ID:	729238
UniProt ID:	Q8IWL1



[View online »](#)

RefSeq Size: 2189

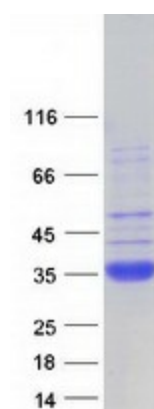
Cytogenetics: 10q22.3

RefSeq ORF: 744

Synonyms: COLEC5; PSAP; PSP-A; PSPA; SFTP1; SFTPA2B; SP-2A; SP-A; SPA2; SPAII

Summary: This gene is one of several genes encoding pulmonary-surfactant associated proteins (SFTPA) located on chromosome 10. Mutations in this gene and a highly similar gene located nearby, which affect the highly conserved carbohydrate recognition domain, are associated with idiopathic pulmonary fibrosis. The current version of the assembly displays only a single centromeric SFTPA gene pair rather than the two gene pairs shown in the previous assembly which were thought to have resulted from a duplication. [provided by RefSeq, Sep 2009]

Product images:



Coomassie blue staining of purified SFTPA2 protein (Cat# TP312495). The protein was produced from HEK293T cells transfected with SFTPA2 cDNA clone (Cat# [RC212495]) using MegaTran 2.0 (Cat# [TT210002]).