

Product datasheet for TP312483L

GOLGA7 (NM_016099) Human Recombinant Protein

Product data:

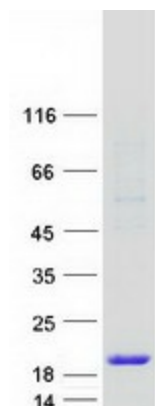
| | |
|---------------------------------------|--|
| Product Type: | Recombinant Proteins |
| Description: | Recombinant protein of human golgi autoantigen, golgin subfamily a, 7 (GOLGA7), transcript variant 1, 1 mg |
| Species: | Human |
| Expression Host: | HEK293T |
| Expression cDNA Clone or AA Sequence: | >RC212483 protein sequence Red =Cloning site Green =Tags(s) |
| | MRPQQAPVSGKVFQIRDYSSGTRCQFQTKFPAELENRIDRQQFEETVRTLNLYAEAEKLGGSYLEGCL ACLTAYTIFLCMETHYEKVLKVKYIQEQNEKIYAPQGLLLTDPIERGLRVIEITIEDRGMSSGR |
| | TRTRPLEQKLISEEDLAANDILDYKDDDDKV |
| Tag: | C-Myc/DDK |
| Predicted MW: | 15.6 kDa |
| Concentration: | >0.05 µg/µL as determined by microplate BCA method |
| Purity: | > 80% as determined by SDS-PAGE and Coomassie blue staining |
| Buffer: | 25 mM Tris-HCl, 100 mM glycine, pH 7.3, 10% glycerol |
| Preparation: | Recombinant protein was captured through anti-DDK affinity column followed by conventional chromatography steps. |
| Note: | For testing in cell culture applications, please filter before use. Note that you may experience some loss of protein during the filtration process. |
| Storage: | Store at -80°C. |
| Stability: | Stable for 12 months from the date of receipt of the product under proper storage and handling conditions. Avoid repeated freeze-thaw cycles. |
| RefSeq: | NP_057183 |
| Locus ID: | 51125 |
| UniProt ID: | Q7Z5G4 |
| RefSeq Size: | 1919 |



[View online »](#)

| | |
|---------------|---|
| Cytogenetics: | 8p11.21 |
| RefSeq ORF: | 411 |
| Synonyms: | GCP16; GOLGA3AP1; GOLGA7A; HSPC041 |
| Summary: | May be involved in protein transport from Golgi to cell surface. The ZDHHC9-GOLGA7 complex is a palmitoyltransferase specific for HRAS and NRAS.[UniProtKB/Swiss-Prot Function] |

Product images:



Coomassie blue staining of purified GOLGA7 protein (Cat# [TP312483]). The protein was produced from HEK293T cells transfected with GOLGA7 cDNA clone (Cat# [RC212483]) using MegaTran 2.0 (Cat# [TT210002]).