

Product datasheet for **TP312481M**

IKBKE (NM_014002) Human Recombinant Protein

Product data:

| | |
|--|--|
| Product Type: | Recombinant Proteins |
| Description: | Recombinant protein of human inhibitor of kappa light polypeptide gene enhancer in B-cells, kinase epsilon (IKBKE), 100 µg |
| Species: | Human |
| Expression Host: | HEK293T |
| Expression cDNA Clone or AA Sequence: | >RC212481 representing NM_014002 Red =Cloning site Green =Tags(s) |

MQSTANYLWHTDDLGGGATASVYKARNKKSSELVAVKVFNTTSYLRPREVQVREFEVLRLKLNHQNIVKL
FAVEETGGSRQKVLVMEYCSSGSLLSVLESPENAFGLPEDEFVLVLRVWVAGMNLRENGIVHRDIKPGN
IMRLVGEEGQSIYKLTDFGAARELDDDEKFSVYGTTEYLHPDMYERAVLRKPQQKAFGVTVDLWSIGVT
LYHAATGSLPFIPFGGPRRNKEIMYRITTEKPAGAIAGAQRRENGPLEWSYTLPTCQLSLGLQSQLVPI
LANILEVEQAKCWGFDQFFAETSDILQRVWHVFSLSQAVLHHIYHAHNTIAIFQEAVHKQTSVAPRHQ
EYLFEGHLCVLEPSVSAQHIAHTTASSPLTLFSTAIPKGLAFRDPALDVPKFPKVDLQADYNTAKGVLG
AGYQALRLARALLDGQELMFRGLHWVMEVLQATCRRTLEVARTSLLYLSSSLGTERFSSVAGTPEIQELK
AAELRSRLRTLAEVLRSRCSQNITETQESLSSLNRELVKSRDQVHEDRSIQQIQCCLDKMNFIYKQFKKS
RMRPGLGYNEEQIHKLDKVNFSHLDKRLLQVFQECCVQKYQASLVTHGKRMRVHETRNLRLVGCSSVAA
CNTEAQGVQESLSKLEELSHQLLQDRAKGAQASPPPIAPYSPTRKDLLLHMQLCEGMKLLASDLLDN
NRIERLNRVPAPPDV

TRTRPLEQLISEEDLAANDILDYKDDDDKV

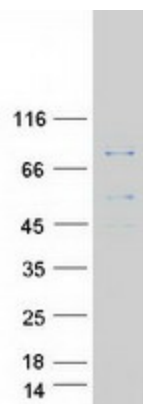
| | |
|-----------------------|--|
| Tag: | C-Myc/DDK |
| Predicted MW: | 80.3 kDa |
| Concentration: | >0.05 µg/µL as determined by microplate BCA method |
| Purity: | > 80% as determined by SDS-PAGE and Coomassie blue staining |
| Buffer: | 25 mM Tris-HCl, 100 mM glycine, pH 7.3, 10% glycerol |
| Preparation: | Recombinant protein was captured through anti-DDK affinity column followed by conventional chromatography steps. |
| Note: | For testing in cell culture applications, please filter before use. Note that you may experience some loss of protein during the filtration process. |



[View online >](#)

| | |
|--------------------------|---|
| Storage: | Store at -80°C. |
| Stability: | Stable for 12 months from the date of receipt of the product under proper storage and handling conditions. Avoid repeated freeze-thaw cycles. |
| RefSeq: | NP_054721 |
| Locus ID: | 9641 |
| UniProt ID: | Q14164 |
| RefSeq Size: | 3263 |
| Cytogenetics: | 1q32.1 |
| RefSeq ORF: | 2148 |
| Synonyms: | IKK-E; IKK-i; IKKE; IKKI |
| Summary: | IKBKE is a noncanonical I-kappa-B (see MIM 164008) kinase (IKK) that is essential for regulating antiviral signaling pathways. IKBKE has also been identified as a breast cancer (MIM 114480) oncogene and is amplified and overexpressed in over 30% of breast carcinomas and breast cancer cell lines (Hutti et al., 2009 [PubMed 19481526]).[supplied by OMIM, Oct 2009] |
| Protein Families: | Druggable Genome, Protein Kinase |
| Protein Pathways: | Cytosolic DNA-sensing pathway, RIG-I-like receptor signaling pathway, Toll-like receptor signaling pathway |

Product images:



Coomassie blue staining of purified IKBKE protein (Cat# [TP312481]). The protein was produced from HEK293T cells transfected with IKBKE cDNA clone (Cat# [RC212481]) using MegaTran 2.0 (Cat# [TT210002]).