

Product datasheet for TP312481L

IKBKE (NM_014002) Human Recombinant Protein

Product data:

Product Type:	Recombinant Proteins
Description:	Recombinant protein of human inhibitor of kappa light polypeptide gene enhancer in B-cells, kinase epsilon (IKBKE), 1 mg
Species:	Human
Expression Host:	HEK293T
Expression cDNA Clone or AA Sequence:	>RC212481 representing NM_014002 Red=Cloning site Green=Tags(s)

MQSTANYLWHTDDLGGGATASVYKARNKKSSELVAVKVFNTTSYLRPREVQVREFEVLRLKLNHQNIVKL
FAVEETGGSRQKVLVMEYCSSGSLLSVLESPENAFGLPEDEFLLVLRVAGMNLRENGIVHRDIKPGN
IMRLVGEEGQSIYKLTDFGAARELDDDEKFSVYGTTEYLHPDMYERAVLRKPQQKAFGVTVDLWSIGVT
LYHAATGSLPFIPFGGPRRNKEIMYRITTEKPAGAIAGAQRRENGPLEWSYTLPTCQLSLGLQSQLVPI
LANILEVEQAKCWGFDQFFAETSDILQRVWHVFSLSQAVLHHIYHAHNTIAIFQEAVHKQTSVAPRHQ
EYLFEGHLCVLEPSVSAQHIAHTTASSPLTLFSTAIPKGLAFRDPALDVPKFPKVDLQADYNTAKGVLG
AGYQALRLARALLDGQELMFRGLHWVMEVLQATCRRTLEVARTSLLYLSSSLGTERFSSVAGTPEIQELK
AAAELRSRLRLAEVLSRCSQNITETQESLSSNRELVKSRDQVHEDRSIQQIQCCLDKMNFIYKQFKKS
RMRPGLGYNEEQIHKLDKVNFSHLDKRLLQVFQECCVQKYQASLVTHGKRMRVHETRNLRLVGCSSVAA
CNTEAQGVQESLSKLEELSHQLLQDRAKGAQASPPPIAPYSPTRKDLLLHMQLCEGMKLLASDLLDN
NRIERLNRVPAPPDV

TRTRPLEQLISEEDLAANDILDYKDDDDKV

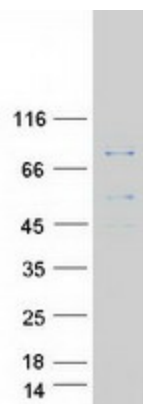
Tag:	C-Myc/DDK
Predicted MW:	80.3 kDa
Concentration:	>0.05 µg/µL as determined by microplate BCA method
Purity:	> 80% as determined by SDS-PAGE and Coomassie blue staining
Buffer:	25 mM Tris-HCl, 100 mM glycine, pH 7.3, 10% glycerol
Preparation:	Recombinant protein was captured through anti-DDK affinity column followed by conventional chromatography steps.
Note:	For testing in cell culture applications, please filter before use. Note that you may experience some loss of protein during the filtration process.



[View online >](#)

Storage:	Store at -80°C.
Stability:	Stable for 12 months from the date of receipt of the product under proper storage and handling conditions. Avoid repeated freeze-thaw cycles.
RefSeq:	NP_054721
Locus ID:	9641
UniProt ID:	Q14164
RefSeq Size:	3263
Cytogenetics:	1q32.1
RefSeq ORF:	2148
Synonyms:	IKK-E; IKK-i; IKKE; IKKI
Summary:	IKBKE is a noncanonical I-kappa-B (see MIM 164008) kinase (IKK) that is essential for regulating antiviral signaling pathways. IKBKE has also been identified as a breast cancer (MIM 114480) oncogene and is amplified and overexpressed in over 30% of breast carcinomas and breast cancer cell lines (Hutti et al., 2009 [PubMed 19481526]).[supplied by OMIM, Oct 2009]
Protein Families:	Druggable Genome, Protein Kinase
Protein Pathways:	Cytosolic DNA-sensing pathway, RIG-I-like receptor signaling pathway, Toll-like receptor signaling pathway

Product images:



Coomassie blue staining of purified IKBKE protein (Cat# [TP312481]). The protein was produced from HEK293T cells transfected with IKBKE cDNA clone (Cat# [RC212481]) using MegaTran 2.0 (Cat# [TT210002]).