

## Product datasheet for **TP312475L**

### Amino terminal enhancer of split (AES) (NM\_001130) Human Recombinant Protein

#### Product data:

Product Type:	Recombinant Proteins
Description:	Recombinant protein of human amino-terminal enhancer of split (AES), transcript variant 2, 1 mg
Species:	Human
Expression Host:	HEK293T
Expression cDNA Clone or AA Sequence:	>RC212475 representing NM_001130 <b>Red</b> =Cloning site <b>Green</b> =Tags(s)

MMFPQSRHSGSSHLPPQLKFTTSDSCDRIKDEFQLLQAQYHSLKLECDKLASEKSEMQRHYVMYYEMSYG  
LNIEMHKQAEIVKRLNGICAQVLPYLSQEHQQQVLGAIERAKQVTAPELNSIIRQQQLQAHQLSQLQALAL  
PLTPLVGLQPPSLPAVSAGTGLLSLSALGSQAHLKEDKNGHDGDTHQEDDGEKSD

**TRTRPLEQKLISEEDLAANDILDYKDDDDKV**

Tag:	C-Myc/DDK
Predicted MW:	21.8 kDa
Concentration:	>0.05 µg/µL as determined by microplate BCA method
Purity:	> 80% as determined by SDS-PAGE and Coomassie blue staining
Buffer:	25 mM Tris-HCl, 100 mM glycine, pH 7.3, 10% glycerol
Preparation:	Recombinant protein was captured through anti-DDK affinity column followed by conventional chromatography steps.
Note:	For testing in cell culture applications, please filter before use. Note that you may experience some loss of protein during the filtration process.
Storage:	Store at -80°C.
Stability:	Stable for 12 months from the date of receipt of the product under proper storage and handling conditions. Avoid repeated freeze-thaw cycles.
RefSeq:	<a href="#">NP_001121</a>
Locus ID:	166
UniProt ID:	<a href="#">Q08117</a> , <a href="#">Q8WY48</a>



[View online »](#)

RefSeq Size: 1687

Cytogenetics: 19p13.3

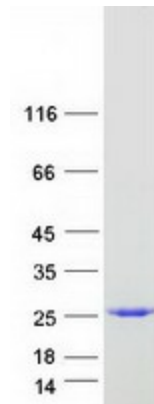
RefSeq ORF: 591

Synonyms: AES; AES-1; AES-2; ESP1; GRG; Grg-5; GRG5

**Summary:** The protein encoded by this gene is similar in sequence to the amino terminus of *Drosophila* enhancer of split groucho, a protein involved in neurogenesis during embryonic development. The encoded protein, which belongs to the groucho/TLE family of proteins, can function as a homooligomer or as a heterooligomer with other family members to dominantly repress the expression of other family member genes. Three transcript variants encoding different isoforms have been found for this gene. [provided by RefSeq, Jul 2008]

**Protein Families:** Druggable Genome, Transcription Factors

### Product images:



Coomassie blue staining of purified TLE5 protein (Cat# [TP312475]). The protein was produced from HEK293T cells transfected with TLE5 cDNA clone (Cat# [RC212475]) using MegaTran 2.0 (Cat# [TT210002]).