

Product datasheet for TP312475

Amino terminal enhancer of split (AES) (NM_001130) Human Recombinant Protein

Product data:

Product Type:	Recombinant Proteins
Description:	Recombinant protein of human amino-terminal enhancer of split (AES), transcript variant 2, 20 µg
Species:	Human
Expression Host:	HEK293T
Expression cDNA Clone or AA Sequence:	>RC212475 representing NM_001130 Red =Cloning site Green =Tags(s)
	MMFPQSRHSGSSHLPQQLKFTTSDSCDRIKDEFQLLQAQYHSLKLECDKLASEKSEMQRHYVMYYEMSY G LNIEMHKQAEIVKRLNGICAQVLPYLSQEHQQQVLGAIERAKQVTAPELNSIIRQQLQAHQLSQLQALAL PLTPLPVGLQPPSLPAVSAGTGLLSLSALGSQAHLKEDKNGHDGDTHQEDDGEKSD
	TRTRPLEQKLISEEDLAANDILDYKDDDDKV
Tag:	C-Myc/DDK
Predicted MW:	21.8 kDa
Concentration:	>0.05 µg/µL as determined by microplate BCA method
Purity:	> 80% as determined by SDS-PAGE and Coomassie blue staining
Buffer:	25 mM Tris-HCl, 100 mM glycine, pH 7.3, 10% glycerol
Preparation:	Recombinant protein was captured through anti-DDK affinity column followed by conventional chromatography steps.
Note:	For testing in cell culture applications, please filter before use. Note that you may experience some loss of protein during the filtration process.
Storage:	Store at -80°C.
Stability:	Stable for 12 months from the date of receipt of the product under proper storage and handling conditions. Avoid repeated freeze-thaw cycles.
RefSeq:	<u>NP_001121</u>
Locus ID:	166



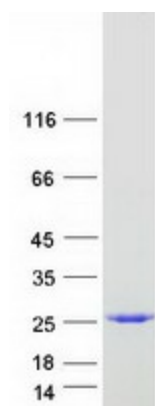
[View online »](#)

UniProt ID: [Q08117](#)
RefSeq Size: 1687
Cytogenetics: 19p13.3
RefSeq ORF: 591
Synonyms: AES; AES-1; AES-2; ESP1; GRG; Grg-5; GRG5

Summary: The protein encoded by this gene is similar in sequence to the amino terminus of Drosophila enhancer of split groucho, a protein involved in neurogenesis during embryonic development. The encoded protein, which belongs to the groucho/TLE family of proteins, can function as a homooligomer or as a heterooligomer with other family members to dominantly repress the expression of other family member genes. Three transcript variants encoding different isoforms have been found for this gene. [provided by RefSeq, Jul 2008]

Protein Families: Druggable Genome, Transcription Factors

Product images:



Coomassie blue staining of purified TLE5 protein (Cat# TP312475). The protein was produced from HEK293T cells transfected with TLE5 cDNA clone (Cat# [RC212475]) using MegaTran 2.0 (Cat# [TT210002]).