

Product datasheet for **TP312468M**

WDSUB1 (NM_152528) Human Recombinant Protein

Product data:

Product Type:	Recombinant Proteins
Description:	Recombinant protein of human WD repeat, sterile alpha motif and U-box domain containing 1 (WDSUB1), transcript variant 3, 100 µg
Species:	Human
Expression Host:	HEK293T
Expression cDNA Clone or AA Sequence:	>RC212468 representing NM_152528 Red =Cloning site Green =Tags(s)

MVKLIHTLADHGDDVNCCAFSFSLLATCSLDKTIIRLYSLRDFTELPHSPLKFHTYAVHCCCCFSPSGHILA
SCSTDGTTVLWNTENGQMLAVMEQPSGSPVRVCQFSPDSTCLASGAADGTVVLWNAQSYKLYRCGSVKDG
SLAACAFSPNGSFFVTGSSCGDLTVWDDKMRCLHSEKAHDLGITCCDFSSQPVS DGEQLQFFRLASCGQ
DCQVKIWIWVSFTHILGFELKYKSTLSGHCAPVLACAFSHDGQMLVSGSVDKSVIVYDTNTENILHTLTQH
TRYVTTCAFAPNTLLLATGSM DKT VNIWQFDLETLCQARRTEHQLKQFTEDWSEEDVSTWLC A QDLKDLV
GIFKMNNIDGKELLNLT KESLADDL KIESLGLRSKVL R KIEELRTKVKSLSSGIPDEFICPITRELMKDP
VIASDGYSYEKEAMENWISKKKRTSPMTNLVLP SA VLT PNR TLKMAINRWLETHQK

TRTRPLEQKLISEEDLAANDILDYKDDDDKV

Tag:	C-Myc/DDK
Predicted MW:	52.7 kDa
Concentration:	>0.05 µg/µL as determined by microplate BCA method
Purity:	> 80% as determined by SDS-PAGE and Coomassie blue staining
Buffer:	25 mM Tris-HCl, 100 mM glycine, pH 7.3, 10% glycerol
Preparation:	Recombinant protein was captured through anti-DDK affinity column followed by conventional chromatography steps.
Note:	For testing in cell culture applications, please filter before use. Note that you may experience some loss of protein during the filtration process.
Storage:	Store at -80°C.
Stability:	Stable for 12 months from the date of receipt of the product under proper storage and handling conditions. Avoid repeated freeze-thaw cycles.



[View online »](#)

RefSeq: [NP_689741](#)

Locus ID: 151525

UniProt ID: [Q8N9V3](#), [D3DPA6](#)

RefSeq Size: 1811

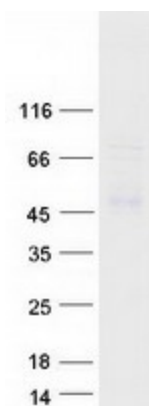
Cytogenetics: 2q24.2

RefSeq ORF: 1428

Synonyms: UBOX6; WDSAM1

Protein Families: Druggable Genome

Product images:



Coomassie blue staining of purified WDSUB1 protein (Cat# [TP312468]). The protein was produced from HEK293T cells transfected with WDSUB1 cDNA clone (Cat# [RC212468]) using MegaTran 2.0 (Cat# [TT210002]).