

Product datasheet for TP312460

IL1RA (IL1RN) (NM_000577) Human Recombinant Protein

Product data:

| | |
|---------------------------------------|---|
| Product Type: | Recombinant Proteins |
| Description: | Recombinant protein of human interleukin 1 receptor antagonist (IL1RN), transcript variant 3, 20 µg |
| Species: | Human |
| Expression Host: | HEK293T |
| Expression cDNA Clone or AA Sequence: | >RC212460 protein sequence Red=Cloning site Green=Tags(s) |

MALETICRPSGRKSSKMQAFRIWDVNQKTFYLRNNQLVAGYLQGPVNVLEEKIDVWPIEPHALFLGIHGG
KMCLSCVKSGDETRLQLEAVNITDLSENKQDKRFAFIRSDSGPTTSFESAACPGWFLCTAMEADQPVSL
TNMPDEGVMVTKFYFQEDE

TRTRPLEQKLISEEDLAANDILDYKDDDDKV

| | |
|----------------|--|
| Tag: | C-Myc/DDK |
| Predicted MW: | 17.7 kDa |
| Concentration: | >0.05 µg/µL as determined by microplate BCA method |
| Purity: | > 80% as determined by SDS-PAGE and Coomassie blue staining |
| Buffer: | 25 mM Tris-HCl, 100 mM glycine, pH 7.3, 10% glycerol |
| Preparation: | Recombinant protein was captured through anti-DDK affinity column followed by conventional chromatography steps. |
| Note: | For testing in cell culture applications, please filter before use. Note that you may experience some loss of protein during the filtration process. |
| Storage: | Store at -80°C. |
| Stability: | Stable for 12 months from the date of receipt of the product under proper storage and handling conditions. Avoid repeated freeze-thaw cycles. |
| RefSeq: | NP_000568 |
| Locus ID: | 3557 |
| UniProt ID: | P18510 |



[View online »](#)

RefSeq Size: 1802

Cytogenetics: 2q14.1

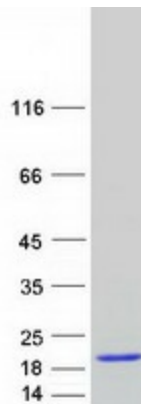
RefSeq ORF: 477

Synonyms: DIRA; ICIL-1RA; IL-1ra; IL-1ra3; IL-1RN; IL1F3; IL1RA; IRAP; MVCD4

Summary: The protein encoded by this gene is a member of the interleukin 1 cytokine family. This protein inhibits the activities of interleukin 1, alpha (IL1A) and interleukin 1, beta (IL1B), and modulates a variety of interleukin 1 related immune and inflammatory responses, particularly in the acute phase of infection and inflammation. This gene and five other closely related cytokine genes form a gene cluster spanning approximately 400 kb on chromosome 2. A polymorphism of this gene is reported to be associated with increased risk of osteoporotic fractures and gastric cancer. Several alternatively spliced transcript variants encoding distinct isoforms have been reported. [provided by RefSeq, Aug 2020]

Protein Families: Druggable Genome, Secreted Protein

Product images:



Coomassie blue staining of purified IL1RN protein (Cat# TP312460). The protein was produced from HEK293T cells transfected with IL1RN cDNA clone (Cat# [RC212460]) using MegaTran 2.0 (Cat# [TT210002]).