

Product datasheet for **TP312447L**

NLN (NM_020726) Human Recombinant Protein

Product data:

Product Type:	Recombinant Proteins
Description:	Recombinant protein of human neurolysin (metallopeptidase M3 family) (NLN), 1 mg
Species:	Human
Expression Host:	HEK293T
Expression cDNA	>RC212447 representing NM_020726
Clone or AA Sequence:	Red=Cloning site Green=Tags(s)

MIARCLLAVRSLRRVGGSRILLRMTLGREVMSPLQAMSSYTVAGRNVLRWDLSPEDIKTRTEELIVQTKQ
VYDAVGMLGIEEVTYENCLQALADVEVKYIVERTMLDFPQHVSDDKEVRAASTEADKRLSRFDIEMSMRG
DIFERIVHLQETCDLGKIKPEARRYLEKSIKMGKRNLHLPEQVQNEIKSMKKRMSELCIDFNKLNEDD
TFLVFSKAELGALPDDFIDSLEKTDDDKEYKITLKYPHYFPVMKKCCIPETRRRMEMAFNTRCKEENTIL
QQLLPLRTKVAKLLGYSTHADVFLEMNTAKSTSRVTAFLDDLSQKLKPLGEAEREFILNLKKKECKDRGF
EYDGKINAWDLYYYMTQTEELKYSIDQEFLKEYFPIEVWTEGLLNTYQELLGLSFEQMTDAHVVNKSVTL
YTVKDKATGEVLGQFYLDLYPREGKYNHAACFGLQPGCLLPDGSRRMVAALVVNFSQPVAGRPSLLRHD
EVRTYFHEFGHVMHQICAQTDFAFSGTNVETDFVEVPSQMLENWWVDVDSLRRLSKHYKDGSPDIADLL
EKLVASRLVNTGLLTLRQIVLSKVDQSLHTNTSLDAASEYAKYCSEILGVAATPGTNMPATFGHLAGGYD
GQYYGYLWSEVFSMDMFYSCFKKEGIMNPEVGMKYRNLIKPGGSLDGMDMLHNFLKREPNOKAFLMSRG
LHAP

TRTRPLEQKLISEEDLAANDILDYKDDDDKV

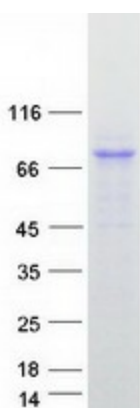
Tag:	C-Myc/DDK
Predicted MW:	80.5 kDa
Concentration:	>0.05 µg/µL as determined by microplate BCA method
Purity:	> 80% as determined by SDS-PAGE and Coomassie blue staining
Buffer:	25 mM Tris-HCl, 100 mM glycine, pH 7.3, 10% glycerol
Preparation:	Recombinant protein was captured through anti-DDK affinity column followed by conventional chromatography steps.
Note:	For testing in cell culture applications, please filter before use. Note that you may experience some loss of protein during the filtration process.
Storage:	Store at -80°C.



[View online »](#)

Stability:	Stable for 12 months from the date of receipt of the product under proper storage and handling conditions. Avoid repeated freeze-thaw cycles.
RefSeq:	NP_065777
Locus ID:	57486
UniProt ID:	Q9BYT8
RefSeq Size:	2882
Cytogenetics:	5q12.3
RefSeq ORF:	2112
Synonyms:	AGTBP; EP24.16; MEP; MOP
Summary:	This gene encodes a member of the metallopeptidase M3 protein family that cleaves neurotensin at the Pro10-Tyr11 bond, leading to the formation of neurotensin(1-10) and neurotensin(11-13). The encoded protein is likely involved in the termination of the neurotensinergic signal in the central nervous system and in the gastrointestinal tract.[provided by RefSeq, Jun 2010]
Protein Families:	Druggable Genome, Protease
Protein Pathways:	Renin-angiotensin system

Product images:



Coomassie blue staining of purified NLN protein (Cat# [TP312447]). The protein was produced from HEK293T cells transfected with NLN cDNA clone (Cat# [RC212447]) using MegaTran 2.0 (Cat# [TT210002]).