

Product datasheet for **TP312420**

EEF2 (NM_001961) Human Recombinant Protein

Product data:

Product Type:	Recombinant Proteins
Description:	Recombinant protein of human eukaryotic translation elongation factor 2 (EEF2), 20 µg
Species:	Human
Expression Host:	HEK293T
Expression cDNA Clone or AA Sequence:	>RC212420 representing NM_001961 Red =Cloning site Green =Tags(s)

MVNFTVDQIRAIMDKKANIRNMSVIAHVDH GKSTLTDSL VCKAGIIASARAGETRFTDRKDEQERCITI
KSTAI SLFYELSEN DLNFIKQSKDGAGFLINLIDSPGHVDFSSVTAALRVTDGALVWDCVSGVCVQTE
TVLRQAI AERIKPVLMMNKMDRALLELQLEPEELYQTFQRIVENVNVII STYGE GEGSGPMGNIMIDPVLG
TVGFGSGLHGWAFTLKQFAEMYAKFAAKGEGQLGPAERAKKVEDMMKKLWGD RYFDPANGKFSKSATSP
EGKKLPRTFCQLILDPIFKVFDAIMNFKKEETAKLIEKLDIKL DSEDKDKEGKPLLKAVMRRWLPAGDAL
LQMITIHLPSPVTAQKYRCELLYEGPPDDEAAMGIKSCDPKGPLMMYISKMVPTSDKGRFYAFGRVFSGL
VSTGLKVRIMGPNYTPGKKEDLYLKPIQRTILMMGRYVEPIEDVPCGNIVGLVGV DQFLVKTGTITTFEH
AHNM RVMKFSVSPVVRVAVEAKNPADLPKLV EGLKRLAKSDPMVQCII EESGEHIIAGAGELHLEICLKD
LEEDHACIPIKSDPVVSYRETVSEESNVLCLSKSPNKHNRLYMKARFPDGLAEDIDKGEVSARQELKQ
RARYLAEKYEW DVAEARKIWCFGPDGTGPNILTDITKG VQYLNEIKDSVWAGFQWATKEGALCEENMRGV
RFDVHDVTLHADAIHRGGGQI IPTARRCLYASVLTAQ PRLMEPIYLVEIQCP EQVVGGIYGV LNRKRGHV
FEESQVAGTPMFVKAYLPVNESFGFTADLRSNTGGQAFPQC VFDHWQILPGDPFDNSSRPSQVAETRK
RKGLKEGIPALDNFLDKL

TRTRPLEQKLISEEDLAANDILDYKDDDDKV

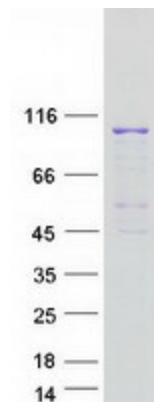
Tag:	C-Myc/DDK
Predicted MW:	95.2 kDa
Concentration:	>0.05 µg/µL as determined by microplate BCA method
Purity:	> 80% as determined by SDS-PAGE and Coomassie blue staining
Buffer:	25 mM Tris-HCl, 100 mM glycine, pH 7.3, 10% glycerol
Preparation:	Recombinant protein was captured through anti-DDK affinity column followed by conventional chromatography steps.



[View online »](#)

Note:	For testing in cell culture applications, please filter before use. Note that you may experience some loss of protein during the filtration process.
Storage:	Store at -80°C.
Stability:	Stable for 12 months from the date of receipt of the product under proper storage and handling conditions. Avoid repeated freeze-thaw cycles.
RefSeq:	NP_001952
Locus ID:	1938
UniProt ID:	P13639 , A0A384N6H1
RefSeq Size:	3148
Cytogenetics:	19p13.3
RefSeq ORF:	2574
Synonyms:	EEF-2; EF-2; EF2; SCA26
Summary:	This gene encodes a member of the GTP-binding translation elongation factor family. This protein is an essential factor for protein synthesis. It promotes the GTP-dependent translocation of the nascent protein chain from the A-site to the P-site of the ribosome. This protein is completely inactivated by EF-2 kinase phosphorylation. [provided by RefSeq, Jul 2008]

Product images:



Coomassie blue staining of purified EEF2 protein (Cat# TP312420). The protein was produced from HEK293T cells transfected with EEF2 cDNA clone (Cat# [RC212420]) using MegaTran 2.0 (Cat# [TT210002]).