

## Product datasheet for **TP312414L**

### Myosin (MYL5) (NM\_002477) Human Recombinant Protein

#### Product data:

Product Type:	Recombinant Proteins
Description:	Recombinant protein of human myosin, light chain 5, regulatory (MYL5), 1 mg
Species:	Human
Expression Host:	HEK293T
Expression cDNA Clone or AA Sequence:	>RC212414 representing NM_002477 <b>Red</b> =Cloning site <b>Green</b> =Tags(s)
	MASRKTKKKEGGALRAQRASSNVFSNFQEQTIQEFKEAFTLMDQNRDGFIDKEDLKDTYASLGKTNVKDD ELDAMLKEASGPINFTMFLNLFGEKLSGTDAEETILNAFKMLDPDGKKGKINKEYIKRLLMSQADKMTAAE VDQMFQFASIDVAGNLDYKALSYVITHGEEKEE
	<b>TRTRPLEQKLISEEDLAANDILDYKDDDDKV</b>
Tag:	C-Myc/DDK
Predicted MW:	19.4 kDa
Concentration:	>0.05 µg/µL as determined by microplate BCA method
Purity:	> 80% as determined by SDS-PAGE and Coomassie blue staining
Buffer:	25 mM Tris-HCl, 100 mM glycine, pH 7.3, 10% glycerol
Preparation:	Recombinant protein was captured through anti-DDK affinity column followed by conventional chromatography steps.
Note:	For testing in cell culture applications, please filter before use. Note that you may experience some loss of protein during the filtration process.
Storage:	Store at -80°C.
Stability:	Stable for 12 months from the date of receipt of the product under proper storage and handling conditions. Avoid repeated freeze-thaw cycles.
RefSeq:	<a href="#">NP_002468</a>
Locus ID:	4636
UniProt ID:	<a href="#">Q02045</a>
RefSeq Size:	661



[View online »](#)

Cytogenetics: 4p16.3

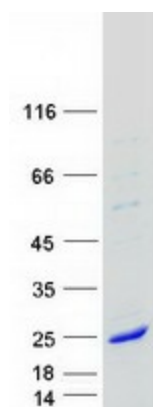
RefSeq ORF: 519

Synonyms: MYLC2

**Summary:** This gene encodes one of the myosin light chains, a component of the hexameric ATPase cellular motor protein myosin. Myosin is composed of two heavy chains, two nonphosphorylatable alkali light chains, and two phosphorylatable regulatory light chains. This gene product, one of the regulatory light chains, is expressed in fetal muscle and in adult retina, cerebellum, and basal ganglia. [provided by RefSeq, Jul 2008]

**Protein Pathways:** Focal adhesion, Leukocyte transendothelial migration, Regulation of actin cytoskeleton, Tight junction

### Product images:



Coomassie blue staining of purified MYL5 protein (Cat# [TP312414]). The protein was produced from HEK293T cells transfected with MYL5 cDNA clone (Cat# [RC212414]) using MegaTran 2.0 (Cat# [TT210002]).