

Product datasheet for **TP312400L**

WFDC10A (NM_080753) Human Recombinant Protein

Product data:

Product Type:	Recombinant Proteins
Description:	Recombinant protein of human WAP four-disulfide core domain 10A (WFDC10A), 1 mg
Species:	Human
Expression Host:	HEK293T
Expression cDNA Clone or AA Sequence:	>RC212400 protein sequence Red =Cloning site Green =Tags(s)
	MAPQTLPLVLCVLLLQAQGGYRDKKRMQKTQLSPEIKVCQQPKLYLCKHLCESHRDCQANNICSTY CGNVCMSIL
	TRTRPLEQKLISEEDLAANDILDYKDDDDKV
Tag:	C-Myc/DDK
Predicted MW:	6.7 kDa
Concentration:	>0.05 µg/µL as determined by microplate BCA method
Purity:	> 80% as determined by SDS-PAGE and Coomassie blue staining
Buffer:	25 mM Tris-HCl, 100 mM glycine, pH 7.3, 10% glycerol
Preparation:	Recombinant protein was captured through anti-DDK affinity column followed by conventional chromatography steps.
Note:	For testing in cell culture applications, please filter before use. Note that you may experience some loss of protein during the filtration process.
Storage:	Store at -80°C.
Stability:	Stable for 12 months from the date of receipt of the product under proper storage and handling conditions. Avoid repeated freeze-thaw cycles.
RefSeq:	NP_542791
Locus ID:	140832
UniProt ID:	Q9H1F0
RefSeq Size:	482
Cytogenetics:	20q13.12



[View online »](#)

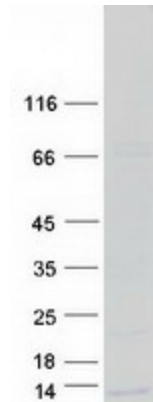
RefSeq ORF: 237

Synonyms: C20orf146; dj688G8.3; WAP10

Summary: This gene encodes a member of the WAP-type four-disulfide core (WFDC) domain family. The WFDC domain, or WAP signature motif, contains eight cysteines forming four disulfide bonds at the core of the protein, and functions as a protease inhibitor. Most WFDC gene members are localized to chromosome 20q12-q13 in two clusters: centromeric and telomeric. This gene belongs to the telomeric cluster. [provided by RefSeq, Jul 2008]

Protein Families: Secreted Protein, Transmembrane

Product images:



Coomassie blue staining of purified WFDC10A protein (Cat# [TP312400]). The protein was produced from HEK293T cells transfected with WFDC10A cDNA clone (Cat# [RC212400]) using MegaTran 2.0 (Cat# [TT210002]).