

Product datasheet for **TP312397L**

IL20 (NM_018724) Human Recombinant Protein

Product data:

Product Type: Recombinant Proteins

Description: Recombinant protein of human interleukin 20 (IL20), 1 mg

Species: Human

Expression Host: HEK293T

**Expression cDNA Clone
or AA Sequence:** >RC212397 protein sequence
Red=Cloning site **Green**=Tags(s)

MKASSLAFSLLSAAFYLLWTPSTGLKTLNLGSCVIATNLQEIRNGFSEIRGSVQAKDGNIDIRILRRTES
LQDTKPANRCCLLRHLLRLYLDRVFKNYQTPDHYTLRKISSLANSFLTIKKDLRLCHAHMTCHCGEEAMK
KYSQILSHFEKLEPQAAVVKALGELDILLQWMEETE

TRTRPLEQKLISEEDLAANDILDYKDDDDKV

Tag: C-Myc/DDK

Predicted MW: 19.9 kDa

Concentration: >0.05 µg/µL as determined by microplate BCA method

Purity: > 80% as determined by SDS-PAGE and Coomassie blue staining

Buffer: 25 mM Tris-HCl, 100 mM glycine, pH 7.3, 10% glycerol

Preparation: Recombinant protein was captured through anti-DDK affinity column followed by conventional chromatography steps.

Note: For testing in cell culture applications, please filter before use. Note that you may experience some loss of protein during the filtration process.

Storage: Store at -80°C.

Stability: Stable for 12 months from the date of receipt of the product under proper storage and handling conditions. Avoid repeated freeze-thaw cycles.

RefSeq: [NP_061194](#)

Locus ID: 50604

UniProt ID: [Q9NYY1](#)

RefSeq Size: 1252



[View online »](#)

Cytogenetics: 1q32.1

RefSeq ORF: 528

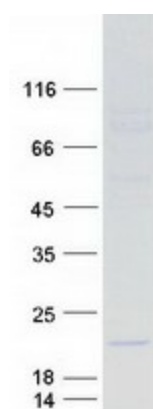
Synonyms: IL-20; IL10D; ZCYTO10

Summary: The protein encoded by this gene is a cytokine structurally related to interleukin 10 (IL10). This cytokine has been shown to transduce its signal through signal transducer and activator of transcription 3 (STAT3) in keratinocytes. A specific receptor for this cytokine is found to be expressed in skin and upregulated dramatically in psoriatic skin, suggesting a role for this protein in epidermal function and psoriasis. [provided by RefSeq, Jul 2008]

Protein Families: Druggable Genome, Secreted Protein

Protein Pathways: Cytokine-cytokine receptor interaction, Jak-STAT signaling pathway

Product images:



Coomassie blue staining of purified IL20 protein (Cat# [TP312397]). The protein was produced from HEK293T cells transfected with IL20 cDNA clone (Cat# [RC212397]) using MegaTran 2.0 (Cat# [TT210002]).