

## Product datasheet for TP312381M

### MADCAM1 (NM\_130762) Human Recombinant Protein

#### Product data:

Product Type:	Recombinant Proteins
Description:	Recombinant protein of human mucosal vascular addressin cell adhesion molecule 1 (MADCAM1), transcript variant 2, 100 µg
Species:	Human
Expression Host:	HEK293T
Expression cDNA Clone or AA Sequence:	>RC212381 representing NM_130762 Red=Cloning site Green=Tags(s)

MDFGLALLLAGLLGLLLGQSLQVKPLQVEPEPWWAVALGASRQLTCRLACADRGASVQWRGLDTSLGAV  
QSDTGRSVLTVRNASLSAAGTRVCVGCSCGGRTFQHTVQLLVYAFPDQLTVSPAALVPGDPEVACTAHKVT  
PVDPNALSFSLVGGQELEGAQALGPEVQEEEEEPQGEDVLFVRVTERWRLPPLGTPVPPALYCQATMRL  
PGLLESHRQAIPASKPAGDQLPAALWTSSAVLGLLLLALPTYHLWKRCRHLAEDDTHPPASLRLLPQVSA  
WAGLRGTGQVGISPS

TRTRPLEQKLISEEDLAANDILDYKDDDDKV

Tag:	C-Myc/DDK
Predicted MW:	29.3 kDa
Concentration:	>0.05 µg/µL as determined by microplate BCA method
Purity:	> 80% as determined by SDS-PAGE and Coomassie blue staining
Buffer:	25 mM Tris-HCl, 100 mM glycine, pH 7.3, 10% glycerol
Preparation:	Recombinant protein was captured through anti-DDK affinity column followed by conventional chromatography steps.
Note:	For testing in cell culture applications, please filter before use. Note that you may experience some loss of protein during the filtration process.
Storage:	Store at -80°C.
Stability:	Stable for 12 months from the date of receipt of the product under proper storage and handling conditions. Avoid repeated freeze-thaw cycles.
RefSeq:	<a href="#">NP_570118</a>
Locus ID:	8174



[View online »](#)

UniProt ID: [Q13477](#)

RefSeq Size: 1275

Cytogenetics: 19p13.3

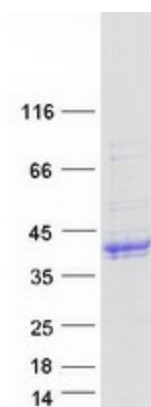
RefSeq ORF: 885

Synonyms: MACAM1

**Summary:** The protein encoded by this gene is an endothelial cell adhesion molecule that interacts preferentially with the leukocyte beta7 integrin LPAM-1 (alpha4beta7), L-selectin, and VLA-4 (alpha4beta1) on myeloid cells to direct leukocytes into mucosal and inflamed tissues. It is a member of the immunoglobulin family and is similar to ICAM1 and VCAM1. At least seven alternatively spliced transcripts encoding different protein isoforms have been found for this gene, but the full-length nature of some variants has not been determined. [provided by RefSeq, Jul 2008]

**Protein Pathways:** Cell adhesion molecules (CAMs)

### Product images:



Coomassie blue staining of purified MADCAM1 protein (Cat# [TP312381]). The protein was produced from HEK293T cells transfected with MADCAM1 cDNA clone (Cat# [RC212381]) using MegaTran 2.0 (Cat# [TT210002]).