

## Product datasheet for TP312368L

### Menin (MEN1) (NM\_130799) Human Recombinant Protein

#### Product data:

Product Type:	Recombinant Proteins
Description:	Recombinant protein of human multiple endocrine neoplasia I (MEN1), transcript variant 2, 1 mg
Species:	Human
Expression Host:	HEK293T
Expression cDNA Clone or AA Sequence:	>RC212368 representing NM_130799 Red=Cloning site Green=Tags(s)

MGLKAAQKTLFPLRSIDDVRLFAAELGREEDLVLLSLVLGFVEHFLAVNRVIPTNPPELTFQPSPAPD  
PPGGLTYFPVADLSIIAALYARFTAQIRGAVDLSLYPREGGVSSRELVKKVSDVIWNSLSRSYFKDRAHI  
QSLFSFITGKLDSSGVAFVAVGACQALGLRDVHLALSEDHAWVFGPNGEQTA EVTWHGKGNEDRRGQT  
VNAGVAERSWLYLKGSYMRCDRKMVAFMVCAINPSIDLHTDSLELLQLQKLLWLLYDLGHLERYPMAL  
GNLADLEELEPTPGRPDPLTYHKGIAAKTYRDEHIYPMYLAGYHCRNRNVREALQAWADTATVIQD  
YNYCREDEEYKEFFEVDVIPNLLKEAASLLEAGEERPGEQSQGTQSQGSALQDPECFAHLLRFYDGI  
CKWEEGSPTPVLHVGWATFLVQSLGRFEGQVRQKVRIVSREAEAAEAPWGEEAREGRRRGRPRRESKPE  
EPPPPKPPALDKLGTGQGA VSGPPRPPGT VAGTARGPEGGSTAQVPAPAASPPPEGPVLTQSEKMKG  
MKELLVATKINSSAIKLQLTAQSQVQMKKQKVSTPSDYTL SFLKRQRKGL

TRTRPLEQKLISEEDLAANDILDYKDDDDKV

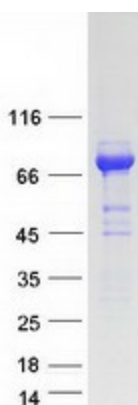
Tag:	C-Myc/DDK
Predicted MW:	67.3 kDa
Concentration:	>0.1 µg/µL as determined by microplate BCA method
Purity:	> 80% as determined by SDS-PAGE and Coomassie blue staining
Buffer:	25 mM Tris-HCl, 100 mM glycine, pH 7.3, 10% glycerol
Preparation:	Recombinant protein was captured through anti-DDK affinity column followed by conventional chromatography steps.
Note:	For testing in cell culture applications, please filter before use. Note that you may experience some loss of protein during the filtration process.
Storage:	Store at -80°C.



[View online »](#)

<b>Stability:</b>	Stable for 12 months from the date of receipt of the product under proper storage and handling conditions. Avoid repeated freeze-thaw cycles.
<b>RefSeq:</b>	<a href="#">NP_570711</a>
<b>Locus ID:</b>	4221
<b>UniProt ID:</b>	<a href="#">O00255</a> , <a href="#">A0A024R5E3</a>
<b>RefSeq Size:</b>	2772
<b>Cytogenetics:</b>	11q13.1
<b>RefSeq ORF:</b>	1830
<b>Synonyms:</b>	MEAI; SCG2
<b>Summary:</b>	This gene encodes menin, a tumor suppressor associated with a syndrome known as multiple endocrine neoplasia type 1. Menin is a scaffold protein that functions in histone modification and epigenetic gene regulation. It is thought to regulate several pathways and processes by altering chromatin structure through the modification of histones. [provided by RefSeq, May 2019]
<b>Protein Families:</b>	Druggable Genome, Transcription Factors

### Product images:



Coomassie blue staining of purified MEN1 protein (Cat# [TP312368]). The protein was produced from HEK293T cells transfected with MEN1 cDNA clone (Cat# [RC212368]) using MegaTran 2.0 (Cat# [TT210002]).