

Product datasheet for **TP312365M**

PYGM (NM_005609) Human Recombinant Protein

Product data:

Product Type: Recombinant Proteins
Description: Recombinant protein of human phosphorylase, glycogen, muscle (PYGM), 100 µg
Species: Human
Expression Host: HEK293T
Expression cDNA Clone or AA Sequence: >RC212365 representing NM_005609
Red=Cloning site **Green**=Tags(s)

MSRPLSDQEKRKQISVRGLAGVENVTELKKNFNRHLHFTLVKDRNVATPRDYFALAHVTRDHLVGRWIR
TQQHYEYKDPKRIYYLSLEFYMGRTLQNTMVNLALENACDEATYQLGLDMEELEEIEEDAGLNGGLGRL
AACFLDSMATLGLAAYGYGIRYEFYGFIFNQKISGGWQMEEADDWLRYGNPWEKARPEFTLPVHFYGHVEHT
SQGAKWVDTQVWLAMPYDTPVPGYRNNVNTMRLWSAKAPNDFNLKDFNVGGYIQAVALDRNLAENISRVL
YPNDNFFEGKELRLKQEYFVAATLQDIIRRFKSSKFGCRDPVRTNFDAFPDKVAIQLNDTHPSLAIPEL
MRILVDLERMDWDKAWDVTVRTCAYTNHTVLPALERWPVHLLLETLLPRHLQIIEINQRFLNRVAAAFP
GDVDRLRRMSLVEEGAVKRINMAHLCIAGSHAVNGVARIHSEILKKTIFKDFYELEPHKFQNKTNGITPR
RWLVLCNPGLAEVIAERIGEDFISDLQDLRKLSSFVDDEAFIRDVAKVKQENKLFKFAAYLERYKVHINP
NSLFDIQVKRIHEYKRQLLNCLHVITLYNRIKREPKNKFFVPRVTMIGGKAAPGYHMAKMIIRLVTAIGDV
VNHDPAVGDRLRVIFLENYRVSLAEKVIPAADLSEQISTAGTEASGTGNMKFMLNGALTIGTMDGANVEM
AEEAGEENFFIFGMRVEDVDKLDQRGYNAQEYDRIPELRQVIEQLSSGFFSPKQPDLFKDIVNMLMHHD
RFKVFADYEDYIKCQEKVSALYKNPREWTRMVIRNIATSGKFSSDRTIAQYAREIWGVEPSRQRLPAPDE
AI

TRTRPLEQKLISEEDLAANDILDYKDDDDKV

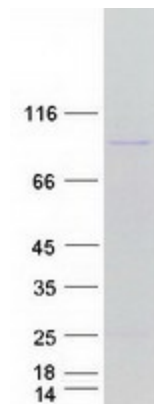
Tag: C-Myc/DDK
Predicted MW: 96.9 kDa
Concentration: >0.05 µg/µL as determined by microplate BCA method
Purity: > 80% as determined by SDS-PAGE and Coomassie blue staining
Buffer: 25 mM Tris-HCl, 100 mM glycine, pH 7.3, 10% glycerol
Preparation: Recombinant protein was captured through anti-DDK affinity column followed by conventional chromatography steps.



[View online »](#)

Note:	For testing in cell culture applications, please filter before use. Note that you may experience some loss of protein during the filtration process.
Storage:	Store at -80°C.
Stability:	Stable for 12 months from the date of receipt of the product under proper storage and handling conditions. Avoid repeated freeze-thaw cycles.
RefSeq:	NP_005600
Locus ID:	5837
UniProt ID:	P11217
RefSeq Size:	3447
Cytogenetics:	11q13.1
RefSeq ORF:	2526
Synonyms:	GSD5
Summary:	This gene encodes a muscle enzyme involved in glycogenolysis. Highly similar enzymes encoded by different genes are found in liver and brain. Mutations in this gene are associated with McArdle disease (myophosphorylase deficiency), a glycogen storage disease of muscle. Alternative splicing results in multiple transcript variants.[provided by RefSeq, Sep 2009]
Protein Families:	Druggable Genome
Protein Pathways:	Insulin signaling pathway, Starch and sucrose metabolism

Product images:



Coomassie blue staining of purified PYGM protein (Cat# [TP312365]). The protein was produced from HEK293T cells transfected with PYGM cDNA clone (Cat# [RC212365]) using MegaTran 2.0 (Cat# [TT210002]).