

Product datasheet for **TP312360M**

SPRYD3 (NM_032840) Human Recombinant Protein

Product data:

| | |
|--|--|
| Product Type: | Recombinant Proteins |
| Description: | Recombinant protein of human SPRY domain containing 3 (SPRYD3), 100 µg |
| Species: | Human |
| Expression Host: | HEK293T |
| Expression cDNA Clone or AA Sequence: | >RC212360 representing NM_032840 Red =Cloning site Green =Tags(s) |

MRRTRRPRFVLMNKMDDLNLHYRFLNWRRRIREIREVRAFRYQERFKHILVDGDTLSYHGNSGEVGCYVA
SRPLTKDSNYFEVSIVDSGVRGTIAVGLVPQYYSLDHQPGWLPDSVAYHADDGKLYNGRAKGRQFGSKCN
SGDRIGCGIEPVSFVQTAQIFFTKNGKRVGSTIMPMSPDGLFPAVGMHSLGEEVRLHLNAELGREDDSV
MMVDSYEDWGRLLHDVRVCGTLLEYLGKGSIVDVGLAQARHPLSTRSHYFEVEIVDPGEKCYIALGLAR
KDYPKNRHPGWSRGSVAYHADDGKIFHGSGVGDPFGPRCYKGDIMGCGIMFPRDYILDSEGSDSDSCDT
V
ILSPTARAVRNVRNVMYLHQEGEEEEEEEEEEEDGEIEPEHEGRKVWVFTRNGKIIGKKDAVVPSSGGF
FPTIGMLSCGEKVVDLHPLSG

TRTRPLEQKLISEEDLAANDILDYKDDDDKV

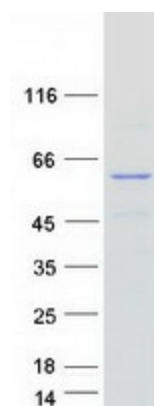
| | |
|-----------------------|--|
| Tag: | C-Myc/DDK |
| Predicted MW: | 49.5 kDa |
| Concentration: | >0.05 µg/µL as determined by microplate BCA method |
| Purity: | > 80% as determined by SDS-PAGE and Coomassie blue staining |
| Buffer: | 25 mM Tris-HCl, 100 mM glycine, pH 7.3, 10% glycerol |
| Preparation: | Recombinant protein was captured through anti-DDK affinity column followed by conventional chromatography steps. |
| Note: | For testing in cell culture applications, please filter before use. Note that you may experience some loss of protein during the filtration process. |
| Storage: | Store at -80°C. |
| Stability: | Stable for 12 months from the date of receipt of the product under proper storage and handling conditions. Avoid repeated freeze-thaw cycles. |



[View online »](#)

RefSeq: NP_116229
 Locus ID: 84926
 UniProt ID: Q8NCJ5
 RefSeq Size: 2568
 Cytogenetics: 12q13.13
 RefSeq ORF: 1326
 Protein Families: Druggable Genome

Product images:



Coomassie blue staining of purified SPRYD3 protein (Cat# [TP312360]). The protein was produced from HEK293T cells transfected with SPRYD3 cDNA clone (Cat# [RC212360]) using MegaTran 2.0 (Cat# [TT210002]).