

Product datasheet for TP312355

Dopamine beta Hydroxylase (DBH) (NM_000787) Human Recombinant Protein

Product data:

Product Type:	Recombinant Proteins
Description:	Recombinant protein of human dopamine beta-hydroxylase (dopamine beta-monoxygenase) (DBH), 20 µg
Species:	Human
Expression Host:	HEK293T
Expression cDNA Clone or AA Sequence:	>RC212355 representing NM_000787 Red =Cloning site Green =Tags(s)

MPALSRWASLPGSPMREAAFMYSTAVAIFLVILVAALQGSAPRESPLPYHIPLDPEGSLELSWNVSYTQE
AIHFQLLVRRKAGVLFGMSDRGELNADLVVLWTDGDTAYFADAWSDQKQIHLDPQQDYQLLQVQRTPEGLTLLFKRPFGTCDPKDYLIXDGTVHLVYGILEEPFRSLEAINGSGLQMGLQRVQLLKPNIPEPELPSD
ACTMEVQAPNIQIPSQETTYWCYIKELPKGFSRHIIKYEPIVTKGNEALVHHMEVFQCAPEMDSVPHFS
GPCDSKMKPDRLNYCRHVLAAWALGAKAFYYPEEAGLAFGGPGSSRYLRLEVHYHNPLVIEGRNDSSGIR
LYYAKLRRFNAGIMELGLVYTPVMAIPPRETAFILTGYCTDKCTQLALPPSGIHIFASQLHHTLTGRKV
VTVLVRDGREWEIVNQDNHYSHPHFQEIRMLKKVSVHPGDVLITSCTYNTEDRELATVGGFGILEEMCVN
YVHYYPQTQLELCKSAVDAGFLQKYFHLINRFNNEVDVCTCPQASVSQQFTSVPWNSFNRDVLKALYSFAP
ISMHCNKSSAVRFQGEWNLQPLPKVISTLEEPTQCPTSQGRSPAGPTVVSIGGGKG

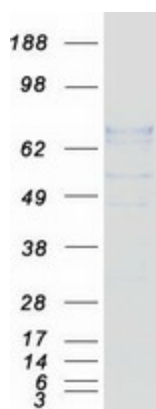
SGPTRRRLEQKLISEEDLAANDILDYKDDDDKV

Tag:	C-Myc/DDK
Predicted MW:	64.9 kDa
Concentration:	>0.05 µg/µL as determined by microplate BCA method
Purity:	> 80% as determined by SDS-PAGE and Coomassie blue staining
Buffer:	25 mM Tris-HCl, 100 mM glycine, pH 7.3, 10% glycerol
Preparation:	Recombinant protein was captured through anti-DDK affinity column followed by conventional chromatography steps.
Note:	For testing in cell culture applications, please filter before use. Note that you may experience some loss of protein during the filtration process.
Storage:	Store at -80°C.



[View online »](#)

Stability:	Stable for 12 months from the date of receipt of the product under proper storage and handling conditions. Avoid repeated freeze-thaw cycles.
RefSeq:	NP_000778
Locus ID:	1621
UniProt ID:	P09172
RefSeq Size:	2812
Cytogenetics:	9q34.2
RefSeq ORF:	1851
Synonyms:	DBM; ORTHYP1
Summary:	<p>The protein encoded by this gene is an oxidoreductase belonging to the copper type II, ascorbate-dependent monooxygenase family. The encoded protein, expressed in neurosecretory vesicles and chromaffin granules of the adrenal medulla, catalyzes the conversion of dopamine to norepinephrine, which functions as both a hormone and as the main neurotransmitter of the sympathetic nervous system. The enzyme encoded by this gene exists in both soluble and membrane-bound forms, depending on the absence or presence, respectively, of a signal peptide. Mutations in this gene cause dopamine beta-hydroxylase deficiency in human patients, characterized by deficits in autonomic and cardiovascular function, including hypotension and ptosis. Polymorphisms in this gene may play a role in a variety of psychiatric disorders. [provided by RefSeq, Aug 2017]</p>
Protein Families:	Druggable Genome, Secreted Protein, Transmembrane
Protein Pathways:	Metabolic pathways, Tyrosine metabolism

Product images:

Coomassie blue staining of purified DBH protein (Cat# TP312355). The protein was produced from HEK293T cells transfected with DBH cDNA clone (Cat# [RC212355]) using MegaTran 2.0 (Cat# [TT210002]).