

## Product datasheet for **TP312330M**

### **CCT6A (NM\_001009186) Human Recombinant Protein**

#### **Product data:**

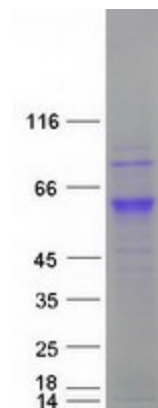
|  |   |
|--|---|
| <b>Product Type:</b>                         | Recombinant Proteins  |
| <b>Description:</b>                          | Purified recombinant protein of Homo sapiens chaperonin containing TCP1, subunit 6A (zeta 1) (CCT6A), transcript variant 2, 100 µg  |
| <b>Species:</b>                              | Human   |
| <b>Expression Host:</b>                      | HEK293T   |
| <b>Expression cDNA Clone or AA Sequence:</b> | >RC212330 representing NM_001009186<br><b>Red</b> =Cloning site <b>Green</b> =Tags(s)<br><br>MAAVKTLNPKAEVARAQAALAVNISAARGLQDVLRTNLGPKGTMKMLVSGAGDIKLTGDGNVLLHEMGL<br>H<br>PRIITEGFEEAKEKALQFLEEVKVSREMDRETLDVARTSLRTKVHAELADVLTEAVVDSILAIAKKQDEP<br>IDLFMIEIMEMKHKSETDTSIRGLVLDHGARHPDMKKRVEDAYILTCNVSLEYEKTEVNSGFFYKSAEE<br>REKLVKAERKFIEDRVKKIIEELKRKVCSDKGFVINQKIDPFSLDALSKEGIVALRRARRNMERLT<br>LACGGVALNSFDDLSPDCLGHAGLVYEYTLGEEKFTFIEKCNNPRSVTLIIKGPKNKHTLTQIKDAVRDGL<br>RAVKNAIDGCVVPGAGAVEVAMAEALIKHKPSVKGRAQLGVQAFADALLIPKVLQNSGFDLQETLVK<br>IQAEHSESGQLVGVDLNTGPEMVAAEVGVWDNYCVKKQLLHSCVIATNILLVDEIMRAGMSSLKG<br><br><b>TRTRPLEQKLISEEDLAANDILDYKDDDDKV</b> |
| <b>Tag:</b>                                  | C-Myc/DDK   |
| <b>Predicted MW:</b>                         | 53.1 kDa  |
| <b>Concentration:</b>                        | >0.05 µg/µL as determined by microplate BCA method  |
| <b>Purity:</b>                               | > 80% as determined by SDS-PAGE and Coomassie blue staining   |
| <b>Buffer:</b>                               | 25 mM Tris-HCl, 100 mM glycine, pH 7.3, 10% glycerol  |
| <b>Preparation:</b>                          | Recombinant protein was captured through anti-DDK affinity column followed by conventional chromatography steps.  |
| <b>Note:</b>                                 | For testing in cell culture applications, please filter before use. Note that you may experience some loss of protein during the filtration process.  |
| <b>Storage:</b>                              | Store at -80°C.   |



[View online »](#)

|                      |   |
|----------------------|---|
| <b>Stability:</b>    | Stable for 12 months from the date of receipt of the product under proper storage and handling conditions. Avoid repeated freeze-thaw cycles.   |
| <b>RefSeq:</b>       | <u><a href="#">NP_001009186</a></u>   |
| <b>Locus ID:</b>     | 908   |
| <b>UniProt ID:</b>   | <u><a href="#">P40227</a></u>   |
| <b>RefSeq Size:</b>  | 2547  |
| <b>Cytogenetics:</b> | 7p11.2  |
| <b>RefSeq ORF:</b>   | 1458  |
| <b>Synonyms:</b>     | CCT-zeta; CCT-zeta-1; CCT6; Cctz; HTR3; MoDP-2; TCP-1-zeta; TCP20; TCPZ; TTCP20   |
| <b>Summary:</b>      | The protein encoded by this gene is a molecular chaperone that is a member of the chaperonin containing TCP1 complex (CCT), also known as the TCP1 ring complex (TRiC). This complex consists of two identical stacked rings, each containing eight different proteins. Unfolded polypeptides enter the central cavity of the complex and are folded in an ATP-dependent manner. The complex folds various proteins, including actin and tubulin. Alternate transcriptional splice variants of this gene, encoding different isoforms, have been characterized. In addition, several pseudogenes of this gene have been located. [provided by RefSeq, Jun 2010] |

## Product images:



Coomassie blue staining of purified CCT6A protein (Cat# [TP312330]). The protein was produced from HEK293T cells transfected with CCT6A cDNA clone (Cat# [RC212330]) using MegaTran 2.0 (Cat# [TT210002]).