

## Product datasheet for TP312316M

### NPTX1 (NM\_002522) Human Recombinant Protein

#### Product data:

Product Type:	Recombinant Proteins
Description:	Recombinant protein of human neuronal pentraxin I (NPTX1), 100 µg
Species:	Human
Expression Host:	HEK293T
Expression cDNA Clone or AA Sequence:	>RC212316 representing NM_002522 Red=Cloning site Green=Tags(s)
	MPAGRAARTCALLALCLLGAGAQDFGPTRFICTSVVPVDADMCAASVAAGGAEELRSSVLQLRETVLQQKE TILSQKETIRELTAKLGRCESQSTLDPGAGEARAGGGRKQPGSGKNTMGDLRTPAAETLSQLGQTLQSL KTRLENLEQYSRLNSSSQTNSLKDLLQSKIDELERQVLSRVNTLEEGKGGPRNDTEERVKIETALTSLHQ RISELEKGQKDNRPGDQKFLTFPLRTNYMYAKVKSLPEMYAFTVCMWLKSSATPGVGT PFSYAVPGQAN ELVLI EWGN NPMEILINDKVAKLPFVINDGKWHHCIVTWTRDGVWEAYQDGTQGGSGENLAPYHPIKPQ GVLVLGGQE QDTLGGGF DATQAFV GELAHFN IWD RKLTPGEVYNLATCSTKALSGNVI AWAESHIEIYGG A TKWTFEACRQIN
	TRTRPLEQKLISEEDLAANDILDYKDDDDKV
Tag:	C-Myc/DDK
Predicted MW:	45 kDa
Concentration:	>0.05 µg/µL as determined by microplate BCA method
Purity:	> 80% as determined by SDS-PAGE and Coomassie blue staining
Buffer:	25 mM Tris-HCl, 100 mM glycine, pH 7.3, 10% glycerol
Preparation:	Recombinant protein was captured through anti-DDK affinity column followed by conventional chromatography steps.
Note:	For testing in cell culture applications, please filter before use. Note that you may experience some loss of protein during the filtration process.
Storage:	Store at -80°C.
Stability:	Stable for 12 months from the date of receipt of the product under proper storage and handling conditions. Avoid repeated freeze-thaw cycles.
RefSeq:	<u><a href="#">NP_002513</a></u>



[View online »](#)

Locus ID: 4884

UniProt ID: [Q15818](#)

RefSeq Size: 5441

Cytogenetics: 17q25.3

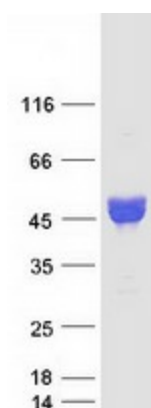
RefSeq ORF: 1296

Synonyms: NP1

**Summary:** NPTX1 is a member of the neuronal pentraxin gene family. Neuronal pentraxin 1 is similar to the rat NP1 gene which encodes a binding protein for the snake venom toxin taipoxin. Human NPTX1 mRNA is exclusively localized to the nervous system. [provided by RefSeq, Jul 2008]

**Protein Families:** Secreted Protein

### Product images:



Coomassie blue staining of purified NPTX1 protein (Cat# [TP312316]). The protein was produced from HEK293T cells transfected with NPTX1 cDNA clone (Cat# [RC212316]) using MegaTran 2.0 (Cat# [TT210002]).