

Product datasheet for **TP312316L**

NPTX1 (NM_002522) Human Recombinant Protein

Product data:

Product Type: Recombinant Proteins

Description: Recombinant protein of human neuronal pentraxin I (NPTX1), 1 mg

Species: Human

Expression Host: HEK293T

Expression cDNA Clone or AA Sequence: >RC212316 representing NM_002522

Red=Cloning site **Green**=Tags(s)

MPAGRAARTCALLALCLLGAGAQDFGPTRFICTSVVPVDADMCAASVAAGGAEELRSSVLQLRETVLQQKE
TILSQKETIRELTAKLGRCESQSTLDPGAGEARAGGGRKQPGSGKNTMGDLRTPAAETLSQLGQTLQSL
KTRLENLEQYSRLNSSSQTNLSKDLLQSKIDELERQVLSRVNTLEEGKGGPRNDTEERVKIETALTSLHQ
RISELEKGQKDNRPDGDKFQLTFPLRTNYMYAKVKSLPEMYAFTVCMWLKSSATPGVGT PFSYAVPGQAN
ELVLI EWGN NPMEILINDKVAKLPFVINDGKWHHCIVTWTRDGVWEAYQDGTQGGSGENLAPYHPIKPQ
GVLVLGGQE QDTLGGGF DATQAFV GELAHFN IWD RKLTPGEVYNLATCSTKALSGNVI AWAESHIEIY GGA
TKWTFEACRQIN

TRTRPLEQKLISEEDLAANDILDYKDDDDKV

Tag: C-Myc/DDK

Predicted MW: 45 kDa

Concentration: >0.05 µg/µL as determined by microplate BCA method

Purity: > 80% as determined by SDS-PAGE and Coomassie blue staining

Buffer: 25 mM Tris-HCl, 100 mM glycine, pH 7.3, 10% glycerol

Preparation: Recombinant protein was captured through anti-DDK affinity column followed by conventional chromatography steps.

Note: For testing in cell culture applications, please filter before use. Note that you may experience some loss of protein during the filtration process.

Storage: Store at -80°C.

Stability: Stable for 12 months from the date of receipt of the product under proper storage and handling conditions. Avoid repeated freeze-thaw cycles.

RefSeq: [NP_002513](#)



[View online >](#)

Locus ID: 4884

UniProt ID: [Q15818](#)

RefSeq Size: 5441

Cytogenetics: 17q25.3

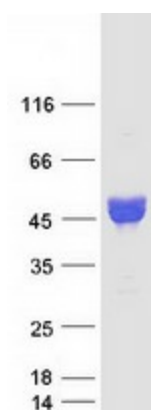
RefSeq ORF: 1296

Synonyms: NP1

Summary: NPTX1 is a member of the neuronal pentraxin gene family. Neuronal pentraxin 1 is similar to the rat NP1 gene which encodes a binding protein for the snake venom toxin taipoxin. Human NPTX1 mRNA is exclusively localized to the nervous system. [provided by RefSeq, Jul 2008]

Protein Families: Secreted Protein

Product images:



Coomassie blue staining of purified NPTX1 protein (Cat# [TP312316]). The protein was produced from HEK293T cells transfected with NPTX1 cDNA clone (Cat# [RC212316]) using MegaTran 2.0 (Cat# [TT210002]).