

Product datasheet for TP312307L

BMP6 (NM_001718) Human Recombinant Protein

Product data:

Product Type:	Recombinant Proteins
Description:	Purified recombinant protein of Homo sapiens bone morphogenetic protein 6 (BMP6), 1 mg
Species:	Human
Expression Host:	HEK293T
Expression cDNA Clone or AA Sequence:	>RC212307 representing NM_001718 Red =Cloning site Green =Tags(s)
	<p>MPGLGRRRAQWLCWWWGLLCSCCGPPPLRPPLPAAAAAAGGQLLGDGGSPGRTEQPPSPQSSSGFLYRR LKTQEKREMQKEILSVLGLPHRPRPLHGLQQPQPALRQEEQQQQQLPRGEPPPGRLLKSAPLFMLDLY NALSADNDEDGASEGERQQSWPHEAASSSQRQPPPGAAHPLNRKSLAPGSGSGGASPLTSAQDSAFLN DADMVMSFVNLVEYDKEFSPRQRHHKEFKFNLSQIPEGEVVTAAEFRIYKDCVMGSKNQTFLLISYQVL QEHQHRDSDLFLDTRVWVASEEGWLEFDITATSNLWVTPQHNMGLQLSVWTRDGVHVPRAAGLVGRD GPYDKQPFMVAFFKVSEVHVRTRRSASSRRRQQRNRSTQSQDVARVSSASDYNSELKTACRKHLYVS FQDLGWQDWIAPKGYAANYCDGECFPLNAHMNATNHAIVQTLVHLMNPEYVPKPCCAPTKLNAISVLY FDDNSNVILKKYRNMVVRACGCH</p> <p>TRTRPLEQKLISEEDLAANDILDYKDDDDKV</p>
Tag:	C-Myc/DDK
Predicted MW:	57 kDa
Concentration:	>0.05 µg/µL as determined by microplate BCA method
Purity:	> 80% as determined by SDS-PAGE and Coomassie blue staining
Buffer:	25 mM Tris-HCl, 100 mM glycine, pH 7.3, 10% glycerol
Preparation:	Recombinant protein was captured through anti-DDK affinity column followed by conventional chromatography steps.
Note:	For testing in cell culture applications, please filter before use. Note that you may experience some loss of protein during the filtration process.
Storage:	Store at -80°C.
Stability:	Stable for 12 months from the date of receipt of the product under proper storage and handling conditions. Avoid repeated freeze-thaw cycles.



[View online »](#)

RefSeq: [NP_001709](#)

Locus ID: 654

UniProt ID: [P22004](#), [Q4VBA3](#), [B4DUF7](#)

RefSeq Size: 2943

Cytogenetics: 6p24.3

RefSeq ORF: 1539

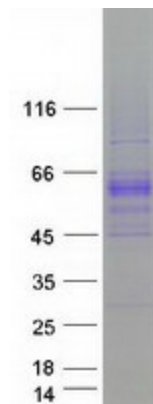
Synonyms: VGR; VGR1

Summary: This gene encodes a secreted ligand of the TGF-beta (transforming growth factor-beta) superfamily of proteins. Ligands of this family bind various TGF-beta receptors leading to recruitment and activation of SMAD family transcription factors that regulate gene expression. The encoded preproprotein is proteolytically processed to generate each subunit of the disulfide-linked homodimer. This protein regulates a wide range of biological processes including iron homeostasis, fat and bone development, and ovulation. Differential expression of this gene may be associated with progression of breast and prostate cancer. Mutations in this gene may be associated with iron overload in human patients. [provided by RefSeq, Jul 2016]

Protein Families: Adult stem cells, Cancer stem cells, Druggable Genome, Embryonic stem cells, ES Cell Differentiation/IPS, Induced pluripotent stem cells, Secreted Protein, Stem cell relevant signaling - TGFb/BMP signaling pathway

Protein Pathways: Hedgehog signaling pathway, TGF-beta signaling pathway

Product images:



Coomassie blue staining of purified BMP6 protein (Cat# [TP312307]). The protein was produced from HEK293T cells transfected with BMP6 cDNA clone (Cat# [RC212307]) using MegaTran 2.0 (Cat# [TT210002]).