

Product datasheet for **TP312297M**

EPN3 (NM_017957) Human Recombinant Protein

Product data:

Product Type: Recombinant Proteins
Description: Recombinant protein of human epsin 3 (EPN3), 100 µg
Species: Human
Expression Host: HEK293T
Expression cDNA >RC212297 representing NM_017957
Clone or AA Sequence: Red=Cloning site Green=Tags(s)

MTTSALRRQVKNIHNYSEAEIKVREATSNPDWGPSSLMSEIADLTFNTVAFTEVMGMLWRRLLNDSGKN
WRHVYKALTLDDYLLKTGSERVAHQRENLYTIQTLKDFQYIDRDGKDQGVNVREKVKQVMALLKDEERL
RQERTHALKTKERMALEGIGIGSGQLGFSRRYGEDYSRSRGSPSSYNSSSSSPRYTSDLEQARPQTSGEE
ELQLQLALAMSREEAEKPVPPASHRDEDLQLQLALRLSRQEHEKEVRSWQGDGSPMANGAGAVVHHQRDR
EPEREERKEEEKLKTSQSSILDADIFVPALAPPSTHCSADPWDIPGFRPNTASGSSWGPSADPWSPIP
SGTVLSRSQPWDLTPMLSSSEPWGRTPLVLPAGPPTTDPWALNSPHHKLPSTGADPWGASLETSDTPGGAS
TFDPFAKPPETETKEGLEQALPSGKPSVELDLFGDPSPSKQNGTKEPDALDLGILGEALTQPSKEA
RACRTPESFLGPSASSLVNLDLVKAPQVAKTRNPFLTGLSAPSPTNPFAGAGETGRPTLNQMRTGSPALG
LAGGPVGGAPLGSMTYSASLPLPLSSVPAGLTLPASVSVFPQAGAFAPQPLLTPSSAGPRPPPPQTGTNP
FL

TRTRPLEQKLISEEDLAANDILDYKDDDDKV

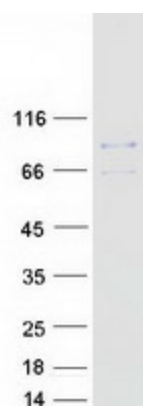
Tag: C-Myc/DDK
Predicted MW: 68 kDa
Concentration: >0.05 µg/µL as determined by microplate BCA method
Purity: > 80% as determined by SDS-PAGE and Coomassie blue staining
Buffer: 25 mM Tris-HCl, 100 mM glycine, pH 7.3, 10% glycerol
Preparation: Recombinant protein was captured through anti-DDK affinity column followed by conventional chromatography steps.
Note: For testing in cell culture applications, please filter before use. Note that you may experience some loss of protein during the filtration process.
Storage: Store at -80°C.



[View online »](#)

Stability:	Stable for 12 months from the date of receipt of the product under proper storage and handling conditions. Avoid repeated freeze-thaw cycles.
RefSeq:	NP_060427
Locus ID:	55040
UniProt ID:	Q9H201
RefSeq Size:	2943
Cytogenetics:	17q21.33
RefSeq ORF:	1896
Protein Pathways:	Endocytosis

Product images:



Coomassie blue staining of purified EPN3 protein (Cat# [TP312297]). The protein was produced from HEK293T cells transfected with EPN3 cDNA clone (Cat# [RC212297]) using MegaTran 2.0 (Cat# [TT210002]).