

Product datasheet for TP312279

SEZ6 (NM_178860) Human Recombinant Protein

Product data:

Product Type:	Recombinant Proteins
Description:	Recombinant protein of human seizure related 6 homolog (mouse) (SEZ6), transcript variant 1, 20 µg
Species:	Human
Expression Host:	HEK293T
Expression cDNA Clone or AA Sequence:	>Peptide sequence encoded by RC212279 Blue=ORF Red=Cloning site Green=Tag(s)

MRPVALLLLPSLLALLAHGLSLEAPTVGKQAPGIEETDGELTAAPTPEQPERGVHVVTTAPTLLLNH
HPLLEEFLEQEGLEKGDDELRPALPFQPDPPAPFTPSPLRLANQDSRPVFTSPTPAMAAPTQPQSKEG
PWSPESPMRLRITAPLPPGSMVPTLGPGEIASTTPPSRAWPTQEGPGDMGRPWWAEVVSQGAGIG
IQGTITSSTASGDDEETTTTTIITTTITVQTPGPCSWNFGPEGSLDPTDLSSPTDVGLDCFFYIS
VYPGYGVEIKVQNISLREGETVTVGLGGPDPLPLANQSFLLRGQVIRSPHQALRFQSLPPPAGPGT
FHFHYQAYLLSCHFRRPAYGDVTVSLHPPGGSARFHCATGYQLKGRHLTCLNATQPFWDSKEPVCIA
ACGGVIRNATTGRIVSPGPGNYSNNLTCHWLLAEPEGQLHLHFEKVSLEAEDDDRLIIRNGDNVEAPP
VYDSYEVEYLPYIEGLLSGKHFFVELSTDSSGAAAGMALRYEAFQQGHCEYFPVKYGNFSSSTPTYVPG
TTVEFSCDPGYTLEQGSIIICVDPHDPQWNETEPACRAVCSGEITDSAGVWVLSNWPPEYGRGQDCIW
GVHVEEDKRIMLDIRVLRIGPGDVLTFYDGGDLTARVLGQYSGPRSHFKLFTSMADVTIQFQSDPGTSV
LGYQQGFVIHFFEVPRNDTCPELPEIPNGWKSQPELVHGTVVYQCYPGYQVVGSSVLMCQWDLTWS
EDLPSCQRVTSCHDPGDVEHSRRLISSPKFPVGATVQYICDQGFLMGSSILTCHDRQAGSPKWSDRAP
KCLLEQLKPCHGLSAPENGARSPEKQLHPAGATIHFSAPGVVLLKQASIKCVPGHPSHWSPPPICRA
ASLDGFYNSRSLDVAKAPAAASSTLDAAHIAAAIFLPLVAMVLLVGGVYFYFSRLQGKSSLQLPRRPRP
YNRITIESAFDNPTYETGSLSFAGDERI
TRTRPLEQKLISEEDLAANDILDYKDDDDKV

Recombinant protein using RC212279 also available, [TP312279M](#)

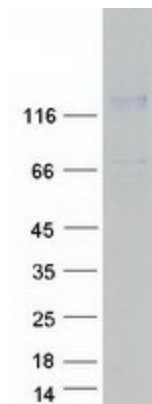
Tag:	C-Myc/DDK
Predicted MW:	107.2 kDa
Concentration:	>0.05 µg/µL as determined by microplate BCA method
Purity:	> 80% as determined by SDS-PAGE and Coomassie blue staining
Buffer:	25 mM Tris-HCl, 100 mM glycine, pH 7.3, 10% glycerol



[View online »](#)

Preparation:	Recombinant protein was captured through anti-DDK affinity column followed by conventional chromatography steps.
Note:	For testing in cell culture applications, please filter before use. Note that you may experience some loss of protein during the filtration process.
Storage:	Store at -80°C.
Stability:	Stable for 12 months from the date of receipt of the product under proper storage and handling conditions. Avoid repeated freeze-thaw cycles.
RefSeq:	NP_849191
Locus ID:	124925
UniProt ID:	Q53EL9
RefSeq Size:	4306
Cytogenetics:	17q11.2
RefSeq ORF:	2982
Synonyms:	BSRPC
Summary:	The protein encoded by this gene is thought to contain five cysteine-rich motifs that are similar to sushi domains, as well as two domains similar to the amino terminal half of the CUB (for complement C1r/C1s, Uegf, Bmp1) domain. Mutations in this gene have been associated with febrile seizures. [provided by RefSeq, Jul 2016]
Protein Families:	Druggable Genome, Transmembrane

Product images:



Coomassie blue staining of purified SEZ6 protein (Cat# TP312279). The protein was produced from HEK293T cells transfected with SEZ6 cDNA clone (Cat# [RC212279]) using MegaTran 2.0 (Cat# [TT210002]).