

## Product datasheet for TP312259

### MRAS (NM\_012219) Human Recombinant Protein

#### Product data:

Product Type:	Recombinant Proteins
Description:	Recombinant protein of human muscle RAS oncogene homolog (MRAS), transcript variant 1, 20 µg
Species:	Human
Expression Host:	HEK293T
Expression cDNA Clone or AA Sequence:	>RC212259 representing NM_012219 Red=Cloning site Green=Tags(s)

MATSAVPSDNLPTYKLVVVGDDGGVGSALTIQFFQKIFVPDYDPTIEDSYLKHTEIDNQWAILDVLDTAG  
QEEFSAMREQYMRTGDGFLIVSVTDKASFEHVDRFHLILRVKDRSEFPMILVANKVDLMHLRKITREQ  
GKEMATKHNTPYIETSAKDPLNVDKAFHDLVRVIRQQIPEKSQKKKKTKWRGDRATGTHKLQCVIL

TRTRPLEQKLISEEDLAANDILDYKDDDDKV

Tag:	C-Myc/DDK
Predicted MW:	23.7 kDa
Concentration:	>0.05 µg/µL as determined by microplate BCA method
Purity:	> 80% as determined by SDS-PAGE and Coomassie blue staining
Buffer:	25 mM Tris-HCl, 100 mM glycine, pH 7.3, 10% glycerol
Preparation:	Recombinant protein was captured through anti-DDK affinity column followed by conventional chromatography steps.
Note:	For testing in cell culture applications, please filter before use. Note that you may experience some loss of protein during the filtration process.
Storage:	Store at -80°C.
Stability:	Stable for 12 months from the date of receipt of the product under proper storage and handling conditions. Avoid repeated freeze-thaw cycles.
RefSeq:	<u><a href="#">NP_036351</a></u>
Locus ID:	22808
UniProt ID:	<u><a href="#">O14807</a></u> , <u><a href="#">Q6FGP0</a></u> , <u><a href="#">Q8WVM9</a></u>



[View online »](#)

RefSeq Size: 3926

Cytogenetics: 3q22.3

RefSeq ORF: 624

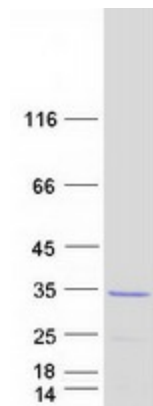
Synonyms: M-RAS; NS11; R-RAS3; RRAS3

**Summary:** This gene encodes a member of the Ras family of small GTPases. These membrane-associated proteins function as signal transducers in multiple processes including cell growth and differentiation, and dysregulation of Ras signaling has been associated with many types of cancer. The encoded protein may play a role in the tumor necrosis factor-alpha and MAP kinase signaling pathways. Alternatively spliced transcript variants encoding multiple isoforms have been observed for this gene. [provided by RefSeq, Nov 2011]

**Protein Families:** Druggable Genome

**Protein Pathways:** MAPK signaling pathway, Regulation of actin cytoskeleton, Tight junction

### Product images:



Coomassie blue staining of purified MRAS protein (Cat# TP312259). The protein was produced from HEK293T cells transfected with MRAS cDNA clone (Cat# [RC212259]) using MegaTran 2.0 (Cat# [TT210002]).