

Product datasheet for TP312246

LOC100132288 (NM_001033515) Human Recombinant Protein

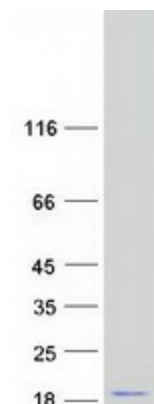
Product data:

Product Type:	Recombinant Proteins
Description:	Recombinant protein of human hypothetical protein LOC100132288 (LOC100132288), 20 µg
Species:	Human
Expression Host:	HEK293T
Expression cDNA Clone or AA Sequence:	>RC212246 protein sequence Red =Cloning site Green =Tags(s)
	MFPVSSGCFQEQQETNKS LPR SASTPETRTKFTQDNLCHAQRERLDSANLWVLVDCILRDTSEDLGLQCD AVNLAFGRCREELEDARHKLQHHLHKMLREITDQEHNVVALKEAIKDKEEPLHIAQTRL
	TR TRPLE QKLISEEDLA ANDILDYKDDDDKV
Tag:	C-Myc/DDK
Predicted MW:	14.7 kDa
Concentration:	>0.05 µg/µL as determined by microplate BCA method
Purity:	> 80% as determined by SDS-PAGE and Coomassie blue staining
Buffer:	25 mM Tris-HCl, 100 mM glycine, pH 7.3, 10% glycerol
Preparation:	Recombinant protein was captured through anti-DDK affinity column followed by conventional chromatography steps.
Note:	For testing in cell culture applications, please filter before use. Note that you may experience some loss of protein during the filtration process.
Storage:	Store at -80°C.
Stability:	Stable for 12 months from the date of receipt of the product under proper storage and handling conditions. Avoid repeated freeze-thaw cycles.
RefSeq:	NP_001028687
Locus ID:	100132288
RefSeq Size:	1640
Cytogenetics:	21p11.2
RefSeq ORF:	387


[View online »](#)

Synonyms: FLJ00219; FLJ35473; FLJ39633; MGC90442

Product images:



Coomassie blue staining of purified LOC100132288 protein (Cat# TP312246). The protein was produced from HEK293T cells transfected with LOC100132288 cDNA clone (Cat# [RC212246]) using MegaTran 2.0 (Cat# [TT210002]).