

Product datasheet for TP312223L

Decorin (DCN) (NM_133503) Human Recombinant Protein

Product data:

Product Type:	Recombinant Proteins
Description:	Recombinant protein of human decorin (DCN), transcript variant A2, 1 mg
Species:	Human
Expression Host:	HEK293T
Expression cDNA Clone or AA Sequence:	>RC212223 protein sequence Red =Cloning site Green =Tags(s)
	MKATIILLLLLAQVSWAGPFQQRGLFDFMLEDEASGIGPEVPDDRDFEPSLGPVPCFRCQCHLRVWQCSDL GLDKVPKDLPPDITLLDLQNNKITEIKDGDGFKNLKLNHALILVNNKISKVSPGAFTPLVKLERLYLSKNQ LKELPEKMPKTLQELRAHENEITKVRKVTFNGLNQMIVIELGTNPLKSSGIENGAFAQGMKKLSYIRIADT NITSIPQGLPSSLTELHLDGKNISRVDAASLKGLNNAKLGLSFNSISAVDNGSLANTPHLRELHLDNNK LTRVPGGLAEHKYIQVVYLHNNNISVVGSSDFCPPGHNTKKASYSGVSLFSNPVQYWEIQPSTFRCVYVR SAIQLGNYK
	TR TRPLEQKLISEEDLAANDILDYKDDDDKV
Tag:	C-Myc/DDK
Predicted MW:	37.9 kDa
Concentration:	>0.05 µg/µL as determined by microplate BCA method
Purity:	> 80% as determined by SDS-PAGE and Coomassie blue staining
Buffer:	25 mM Tris-HCl, 100 mM glycine, pH 7.3, 10% glycerol
Preparation:	Recombinant protein was captured through anti-DDK affinity column followed by conventional chromatography steps.
Note:	For testing in cell culture applications, please filter before use. Note that you may experience some loss of protein during the filtration process.
Storage:	Store at -80°C.
Stability:	Stable for 12 months from the date of receipt of the product under proper storage and handling conditions. Avoid repeated freeze-thaw cycles.
RefSeq:	<u>NP_598010</u>
Locus ID:	1634



[View online »](#)

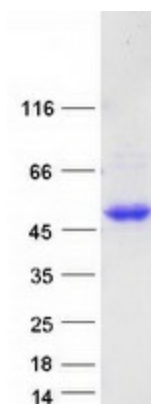
UniProt ID:	P07585 , Q6FH10
RefSeq Size:	2151
Cytogenetics:	12q21.33
RefSeq ORF:	1077
Synonyms:	CSCD; DSPG2; PG40; PGII; PGS2; SLRR1B

Summary: This gene encodes a member of the small leucine-rich proteoglycan family of proteins. Alternative splicing results in multiple transcript variants, at least one of which encodes a preproprotein that is proteolytically processed to generate the mature protein. This protein plays a role in collagen fibril assembly. Binding of this protein to multiple cell surface receptors mediates its role in tumor suppression, including a stimulatory effect on autophagy and inflammation and an inhibitory effect on angiogenesis and tumorigenesis. This gene and the related gene biglycan are thought to be the result of a gene duplication. Mutations in this gene are associated with congenital stromal corneal dystrophy in human patients. [provided by RefSeq, Nov 2015]

Protein Families: Druggable Genome, Secreted Protein

Protein Pathways: TGF-beta signaling pathway

Product images:



Coomassie blue staining of purified DCN protein (Cat# [TP312223]). The protein was produced from HEK293T cells transfected with DCN cDNA clone (Cat# [RC212223]) using MegaTran 2.0 (Cat# [TT210002]).