

Product datasheet for TP312198M

SULT1A1 (NM_177534) Human Recombinant Protein

Product data:

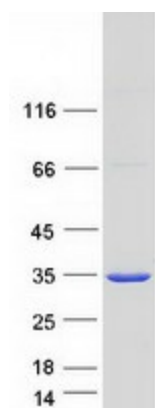
| | |
|---------------------------------------|--|
| Product Type: | Recombinant Proteins |
| Description: | Recombinant protein of human sulfotransferase family, cytosolic, 1A, phenol-preferring, member 1 (SULT1A1), transcript variant 4, 100 µg |
| Species: | Human |
| Expression Host: | HEK293T |
| Expression cDNA Clone or AA Sequence: | >RC212198 representing NM_177534 Red =Cloning site Green =Tags(s) MELIQDTSRPPLEYVKGVPLIKYFAEALGPLQSFQARPDDLSTYPKSGTTWVSQILDMIYQGGDLEKC HRAPIFMRVPFLEFKAPGIPSGMETLKDTPAPRLLKTHLPLALLPQTLLDQKVKVVYVARNAKDVAVSYY HFYHMAKVHPEPGTWDSFLEKFMVGEVSYGSWYQHVQEWELSRTHPVLYLFYEDMKENPKREIQKILE F VGRSLPEETVDFVQHTSFKEMKKNPMTNYTTPQEFMDHSISPFMRKGMAGDWKTTFTVAQNERFDA DY AEKMAGCSLSFRSEL TRTRPLEQKLISEEDLAANDILDYKDDDDKV |
| Tag: | C-Myc/DDK |
| Predicted MW: | 34 kDa |
| Concentration: | >0.05 µg/µL as determined by microplate BCA method |
| Purity: | > 80% as determined by SDS-PAGE and Coomassie blue staining |
| Buffer: | 25 mM Tris-HCl, 100 mM glycine, pH 7.3, 10% glycerol |
| Preparation: | Recombinant protein was captured through anti-DDK affinity column followed by conventional chromatography steps. |
| Note: | For testing in cell culture applications, please filter before use. Note that you may experience some loss of protein during the filtration process. |
| Storage: | Store at -80°C. |
| Stability: | Stable for 12 months from the date of receipt of the product under proper storage and handling conditions. Avoid repeated freeze-thaw cycles. |



[View online »](#)

| | |
|-------------------|--|
| RefSeq: | NP_803878 |
| Locus ID: | 6817 |
| UniProt ID: | P50225 |
| RefSeq Size: | 1598 |
| Cytogenetics: | 16p11.2 |
| RefSeq ORF: | 885 |
| Synonyms: | HAST1/HAST2; P-PST; P-PST 1; PST; ST1A1; ST1A3; STP; STP1; ts-PST; TSPST1 |
| Summary: | Sulfotransferase enzymes catalyze the sulfate conjugation of many hormones, neurotransmitters, drugs, and xenobiotic compounds. These cytosolic enzymes are different in their tissue distributions and substrate specificities. The gene structure (number and length of exons) is similar among family members. This gene encodes one of two phenol sulfotransferases with thermostable enzyme activity. Multiple alternatively spliced variants that encode two isoforms have been identified for this gene. [provided by RefSeq, Jul 2008] |
| Protein Pathways: | Sulfur metabolism |

Product images:



Coomassie blue staining of purified SULT1A1 protein (Cat# [TP312198]). The protein was produced from HEK293T cells transfected with SULT1A1 cDNA clone (Cat# [RC212198]) using MegaTran 2.0 (Cat# [TT210002]).