

Product datasheet for TP312160

RRAGD (NM_021244) Human Recombinant Protein

Product data:

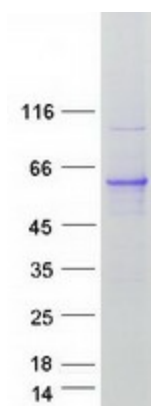
Product Type:	Recombinant Proteins
Description:	Recombinant protein of human Ras-related GTP binding D (RRAGD), 20 µg
Species:	Human
Expression Host:	HEK293T
Expression cDNA Clone or AA Sequence:	>RC212160 representing NM_021244 Red =Cloning site Green =Tags(s)
	 MSQVLGKQPQDEDDAEEEEEEDELVGLADYGDGPDSSDADPDSGTEEGVLDFSDPFSTEVKPRILLMGL RRSGKSSIQKVVFKMSPNETLFLESTNKICREDVSNSSFVNFQIWDFFGQIDFFDPTFDYEMIFRGTGA LIFVIDSQDDYMEALARLHLTVTRAYKVNTDINFEVFIHKVDGLSDDHKIETQRDIHQRANDDLADAGLE KIHLFSYLTSIYDHSIFEAFSKVVQKLIPQLPTLELLNIFISNSGIEKAFLFDVWSKIYIATDSTPVDM QTYELCCDMIDVVIDISCIYGLKEDGAGTPYDKESTAIKLNNTTVLYLKEVTKFLALVCFVREESFERK GLIDYNFHCFRKAIHEVFEVRMKVVKSRKVQNRLQKKKRATPNGTPRVLL TRTRPLEQKLISEEDLAANDILDYKDDDDKV
Tag:	C-Myc/DDK
Predicted MW:	45.4 kDa
Concentration:	>0.05 µg/µL as determined by microplate BCA method
Purity:	> 80% as determined by SDS-PAGE and Coomassie blue staining
Buffer:	25 mM Tris-HCl, 100 mM glycine, pH 7.3, 10% glycerol
Preparation:	Recombinant protein was captured through anti-DDK affinity column followed by conventional chromatography steps.
Note:	For testing in cell culture applications, please filter before use. Note that you may experience some loss of protein during the filtration process.
Storage:	Store at -80°C.
Stability:	Stable for 12 months from the date of receipt of the product under proper storage and handling conditions. Avoid repeated freeze-thaw cycles.
RefSeq:	NP_067067
Locus ID:	58528



[View online »](#)

UniProt ID:	<u>Q9NQL2</u>
RefSeq Size:	1453
Cytogenetics:	6q15
RefSeq ORF:	1200
Synonyms:	bA11D8.2.1; RAGD
Summary:	RRAGD is a monomeric guanine nucleotide-binding protein, or G protein. By binding GTP or GDP, small G proteins act as molecular switches in numerous cell processes and signaling pathways.[supplied by OMIM, Apr 2004]

Product images:



Coomassie blue staining of purified RRAGD protein (Cat# TP312160). The protein was produced from HEK293T cells transfected with RRAGD cDNA clone (Cat# [RC212160]) using MegaTran 2.0 (Cat# [TT210002]).