

## Product datasheet for TP312117

### CLLU1OS (NM\_001025232) Human Recombinant Protein

#### Product data:

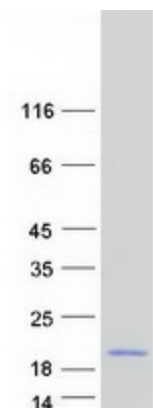
Product Type:	Recombinant Proteins
Description:	Recombinant protein of human chronic lymphocytic leukemia up-regulated 1 opposite strand (CLLU1OS), 20 µg
Species:	Human
Expression Host:	HEK293T
Expression cDNA Clone or AA Sequence:	>RC212117 representing NM_001025232 <b>Red</b> =Cloning site <b>Green</b> =Tags(s)  MNKLGHNELKECLKTATDSLQTVQPSISQTCTSYGPALGAPLPGRNEVALLTSLPPNYEISEGKPRAISA YVRAGKGNVTRRRKTHLGNDGKKEAQEKM  <b>TRTRPLEQKLISEEDLAANDILDYKDDDDKV</b>
Tag:	C-Myc/DDK
Predicted MW:	10.8 kDa
Concentration:	>0.05 µg/µL as determined by microplate BCA method
Purity:	> 80% as determined by SDS-PAGE and Coomassie blue staining
Buffer:	25 mM Tris-HCl, 100 mM glycine, pH 7.3, 10% glycerol
Preparation:	Recombinant protein was captured through anti-DDK affinity column followed by conventional chromatography steps.
Note:	For testing in cell culture applications, please filter before use. Note that you may experience some loss of protein during the filtration process.
Storage:	Store at -80°C.
Stability:	Stable for 12 months from the date of receipt of the product under proper storage and handling conditions. Avoid repeated freeze-thaw cycles.
RefSeq:	<u><a href="#">NP_001020403</a></u>
Locus ID:	574016
RefSeq Size:	686
Cytogenetics:	12q22



[View online »](#)

RefSeq ORF: 303

### Product images:



Coomassie blue staining of purified CLLU1OS protein (Cat# TP312117). The protein was produced from HEK293T cells transfected with CLLU1OS cDNA clone (Cat# [RC212117]) using MegaTran 2.0 (Cat# [TT210002]).