

## Product datasheet for **TP312114M**

### RPL12 (NM\_000976) Human Recombinant Protein

#### Product data:

**Product Type:** Recombinant Proteins

**Description:** Recombinant protein of human ribosomal protein L12 (RPL12), 100 µg

**Species:** Human

**Expression Host:** HEK293T

**Expression cDNA Clone  
or AA Sequence:** >RC212114 protein sequence  
**Red**=Cloning site **Green**=Tags(s)

MPPKFDPNKVVYLRCTGGVEGATSALAPKIGPLGLSPKKVGDIAKATGDWKGLRITVKLTIQNRQAQ  
IEVPSASALIKALKEPPRDRKKQKNIKHSGNITFDEIVNIARQMRHRSLARELSGTIKEILGTAQSVG  
CNVDGRHPHDIIDDINSGAVECPAS

**TRTRPLEQKLISEEDLAANDILDYKDDDDKV**

**Tag:** C-Myc/DDK

**Predicted MW:** 17.6 kDa

**Concentration:** >0.05 µg/µL as determined by microplate BCA method

**Purity:** > 80% as determined by SDS-PAGE and Coomassie blue staining

**Buffer:** 25 mM Tris-HCl, 100 mM glycine, pH 7.3, 10% glycerol

**Preparation:** Recombinant protein was captured through anti-DDK affinity column followed by conventional chromatography steps.

**Note:** For testing in cell culture applications, please filter before use. Note that you may experience some loss of protein during the filtration process.

**Storage:** Store at -80°C.

**Stability:** Stable for 12 months from the date of receipt of the product under proper storage and handling conditions. Avoid repeated freeze-thaw cycles.

**RefSeq:** [NP\\_000967](#)

**Locus ID:** 6136

**UniProt ID:** [P30050](#)

**RefSeq Size:** 674



[View online »](#)

Cytogenetics: 9q33.3

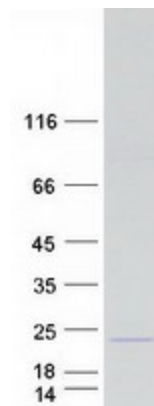
RefSeq ORF: 495

Synonyms: L12

**Summary:** Ribosomes, the organelles that catalyze protein synthesis, consist of a small 40S subunit and a large 60S subunit. Together these subunits are composed of 4 RNA species and approximately 80 structurally distinct proteins. This gene encodes a ribosomal protein that is a component of the 60S subunit. The protein belongs to the L11P family of ribosomal proteins. It is located in the cytoplasm. The protein binds directly to the 26S rRNA. This gene is co-transcribed with the U65 snoRNA, which is located in its fourth intron. As is typical for genes encoding ribosomal proteins, there are multiple processed pseudogenes of this gene dispersed through the genome. [provided by RefSeq, Jul 2008]

**Protein Pathways:** Ribosome

### Product images:



Coomassie blue staining of purified RPL12 protein (Cat# [TP312114]). The protein was produced from HEK293T cells transfected with RPL12 cDNA clone (Cat# [RC212114]) using MegaTran 2.0 (Cat# [TT210002]).