

Product datasheet for TP312111L

DNALI1 (NM_003462) Human Recombinant Protein

Product data:

Product Type:	Recombinant Proteins
Description:	Recombinant protein of human dynein, axonemal, light intermediate chain 1 (DNALI1), 1 mg
Species:	Human
Expression Host:	HEK293T
Expression cDNA Clone or AA Sequence:	>RC212111 representing NM_003462 Red=Cloning site Green=Tags(s)
	MVTANKAHTGQGSCWVATLASAMIPPADSLKDYDTPVLVSRNTEKRSPKARLLKVSPQQPGPSGSAPQPP KTKLPSTPCVPDPTKQAEIILNAILPPREWVEDTQLWIQQVSSSTPSTRMDVHLQEQLDLKLRQARET GICPVRRELYSQCFDELIREVTINCAERGLLLLRVRDEIRMTIAAYQTLYESSVAFGMRKALQAEQKSD MERKIAELETEKRDLERQVNEQKAKCEATEKRESERRQVEEKKHNEEQFLKRTNQQLKAQLEGIIAPKK
	TRTRPLEQKLISEEDLAANDILDYKDDDDKV
Tag:	C-Myc/DDK
Predicted MW:	31.7 kDa
Concentration:	>0.05 µg/µL as determined by microplate BCA method
Purity:	> 80% as determined by SDS-PAGE and Coomassie blue staining
Buffer:	25 mM Tris-HCl, 100 mM glycine, pH 7.3, 10% glycerol
Preparation:	Recombinant protein was captured through anti-DDK affinity column followed by conventional chromatography steps.
Note:	For testing in cell culture applications, please filter before use. Note that you may experience some loss of protein during the filtration process.
Storage:	Store at -80°C.
Stability:	Stable for 12 months from the date of receipt of the product under proper storage and handling conditions. Avoid repeated freeze-thaw cycles.
RefSeq:	NP_003453
Locus ID:	7802
UniProt ID:	O14645 , A0A499FIY3



[View online »](#)

RefSeq Size: 2663

Cytogenetics: 1p34.3

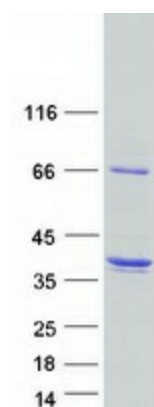
RefSeq ORF: 840

Synonyms: dj423B22.5; hp28; P28

Summary: This gene is the human homolog of the Chlamydomonas inner dynein arm gene, p28. The precise function of this gene is not known, however, it is a potential candidate for immotile cilia syndrome (ICS). Ultrastructural defects of the inner dynein arms are seen in patients with ICS. Immotile mutant strains of Chlamydomonas, a biflagellated algae, exhibit similar defects. [provided by RefSeq, Jul 2008]

Protein Pathways: Huntington's disease

Product images:



Coomassie blue staining of purified DNALI1 protein (Cat# [TP312111]). The protein was produced from HEK293T cells transfected with DNALI1 cDNA clone (Cat# [RC212111]) using MegaTran 2.0 (Cat# [TT210002]).