

Product datasheet for TP312097M

EPS15 (NM_001981) Human Recombinant Protein

Product data:

Product Type:	Recombinant Proteins
Description:	Recombinant protein of human epidermal growth factor receptor pathway substrate 15 (EPS15), 100 µg
Species:	Human
Expression Host:	HEK293T
Expression cDNA Clone or AA Sequence:	>RC212097 representing NM_001981 Red=Cloning site Green=Tags(s)

MAAAAQLSLTQLSSGNPVYEKYYRQVDTGNTGRVLASDAAFLKKSGLPDLILGKIWDLADTDGKGILNK
QEFFVALRLVACAQNGLEVLSSLNLAVPPPRFHDTSPLISGTSAAELPWAVKPEDKAKYDAIFDLSL
PVNGFLSGDKVKPVLLNSKLPVDILGRVWELSDIDHDGMLDRDEFAMFLVYCALEKEPVPMSLPPALV
PPSKRKTWVWSPA EKAKYDEIFLKTDKMDG FVSGLEVREIFLKTGLPSTLLAHIWSLCDTKDCGKLSKD
QFALAFHLISQKLIKIDPPHVLTPEMIPPSDRASLQKNIIGSSPVADFSAIKELDTLNNEIVDLQREKN
NVEQDLKEKEDTIKQRTSEVQDLQDEVQRENTNLQKLQAQKQVQELDELDEQKAQLEEQLKEVRKKA
EEAQLISSLKAELTSQESQISTYEEELAKAREELSRLQQETAEEESVSGKAQLEPLQQHLQDSQQEIS
SMQMKLMEMKDLENHNSQLNWCSSPHSILVNGATDYCSLSTSSSETANLNEHVEGQSNLESEPIHQESPA
RSSPELLPSGVTDENEVTTAVTEKVCSELNDRHSKEEDPFNVDSSSLTGPVADTNLDFQSDPFVGS
FKDDPFKIDPFGGDPFKGSDPFASDCFFRQSTDPFATSSTDPFSAANNSSITSVETLKHNDPFAPGGTV
VAASDSATDPFASVFGNESFGGGFADFSTLSKVNNEPFRSATSSSVSNVITKNVFEETSVKSEDEPPA
LPPKIGTPTRPCPLPPGKRSINKLDSPDPFKLNDPFQFPFGNDSPKEKDPEIFCDPFTSATTTTNKEADP
SNFANFSAYPSEEDMIEWAKRESEREEEQRLARLNQQEQEDLELAIALSKEISEA

TRTRPLEQKLISEEDLAANDILDYKDDDDKV

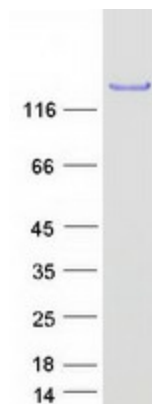
Tag:	C-Myc/DDK
Predicted MW:	98.5 kDa
Concentration:	>0.05 µg/µL as determined by microplate BCA method
Purity:	> 80% as determined by SDS-PAGE and Coomassie blue staining
Buffer:	25 mM Tris-HCl, 100 mM glycine, pH 7.3, 10% glycerol
Preparation:	Recombinant protein was captured through anti-DDK affinity column followed by conventional chromatography steps.



[View online »](#)

Note:	For testing in cell culture applications, please filter before use. Note that you may experience some loss of protein during the filtration process.
Storage:	Store at -80°C.
Stability:	Stable for 12 months from the date of receipt of the product under proper storage and handling conditions. Avoid repeated freeze-thaw cycles.
RefSeq:	NP_001972
Locus ID:	2060
UniProt ID:	P42566
RefSeq Size:	5220
Cytogenetics:	1p32.3
RefSeq ORF:	2688
Synonyms:	AF-1P; AF1P; MLLT5
Summary:	This gene encodes a protein that is part of the EGFR pathway. The protein is present at clatherin-coated pits and is involved in receptor-mediated endocytosis of EGF. Notably, this gene is rearranged with the HRX/ALL/MLL gene in acute myelogenous leukemias. Alternative splicing results in multiple transcript variants encoding distinct isoforms. [provided by RefSeq, May 2009]
Protein Families:	Druggable Genome
Protein Pathways:	Endocytosis

Product images:



Coomassie blue staining of purified EPS15 protein (Cat# [TP312097]). The protein was produced from HEK293T cells transfected with EPS15 cDNA clone (Cat# [RC212097]) using MegaTran 2.0 (Cat# [TT210002]).