

## Product datasheet for TP312097L

### EPS15 (NM\_001981) Human Recombinant Protein

#### Product data:

Product Type:	Recombinant Proteins
Description:	Recombinant protein of human epidermal growth factor receptor pathway substrate 15 (EPS15), 1 mg
Species:	Human
Expression Host:	HEK293T
Expression cDNA Clone or AA Sequence:	>RC212097 representing NM_001981 Red=Cloning site Green=Tags(s)

MAAAAQLSLTQLSSGNPVYEKYYRQVDTGNTGRVLASDAAFLKKSGLPDLILGKIWDLADTDGKGILNK  
QEFFVALRLVACAQNGLEVLSSLNLAVPPPRFHDTSPLLISGTSAAELPWAVKPEDKAKYDAIFDLSL  
PVNGFLSGDKVKPVLLNSKLPVDILGRVWELSDIDHDGMLDRDEFAMFLVYCALEKEPVPMSLPPALV  
PPSKRKTWVWSPA EKAKYDEIFLKTDKMDG FVSGLEVREIFLKTGLPSTLLAHIWSLCDTKDCGKLSKD  
QFALAFHLISQKLIKIDPPHVLTPMIPPSDRASLQKNIIGSSPVADFSAIKELDTLNNEIVDLQREKN  
NVEQDLKEKEDTIKQRTSEVQDLQDEVQRENTNLQKLQAQKQQVQELDELDEQKAQLEEQLKEVRKKA  
EEAQLISSLKAELTSQESQISTYEEELAKAREELSRLQQETAEEESVSGKAQLEPLQQHLQDSQQEIS  
SMQMKLMEMKDLENHNSQLNWCSSPHSILVNGATDYCSLSTSSSETANLNEHVEGQSNLESEPIHQESPA  
RSSPELLPSGVTDENEVTTAVTEKVCSELNDRHSKEEDPFNVDSSSLTGPVADTNLDFQSDPFVGS DP  
FKDDPFKIDPFGGDPFKGSDPFASDCFFRQSTDPFATSSTDPFSAANNSSITSVETLKHNDPFAPGGTV  
VAASDSATDPFASVFGNESFGGGFADFSTLSKVNNEPFRSATSSSVSNVITKNVFEETS VKSEDEPPA  
LPPKIGTPTRPCPLPPGKRSINKLDSPDPFKLNDPFQFPNGNDSPKEKDPEIFCDPFTSATTTTNKEADP  
SNFANFSAYPSEEDMIEWAKRESEREEEQRLARLNQQEQEDLELAIALS KSEISEA

TRTRPLEQKLISEEDLAANDILDYKDDDDKV

Tag:	C-Myc/DDK
Predicted MW:	98.5 kDa
Concentration:	>0.05 µg/µL as determined by microplate BCA method
Purity:	> 80% as determined by SDS-PAGE and Coomassie blue staining
Buffer:	25 mM Tris-HCl, 100 mM glycine, pH 7.3, 10% glycerol
Preparation:	Recombinant protein was captured through anti-DDK affinity column followed by conventional chromatography steps.



[View online »](#)

**Note:** For testing in cell culture applications, please filter before use. Note that you may experience some loss of protein during the filtration process.

**Storage:** Store at -80°C.

**Stability:** Stable for 12 months from the date of receipt of the product under proper storage and handling conditions. Avoid repeated freeze-thaw cycles.

**RefSeq:** [NP\\_001972](#)

**Locus ID:** 2060

**UniProt ID:** [P42566](#)

**RefSeq Size:** 5220

**Cytogenetics:** 1p32.3

**RefSeq ORF:** 2688

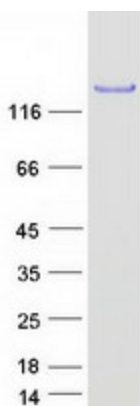
**Synonyms:** AF-1P; AF1P; MLLT5

**Summary:** This gene encodes a protein that is part of the EGFR pathway. The protein is present at clatherin-coated pits and is involved in receptor-mediated endocytosis of EGF. Notably, this gene is rearranged with the HRX/ALL/MLL gene in acute myelogenous leukemias. Alternative splicing results in multiple transcript variants encoding distinct isoforms. [provided by RefSeq, May 2009]

**Protein Families:** Druggable Genome

**Protein Pathways:** Endocytosis

### Product images:



Coomassie blue staining of purified EPS15 protein (Cat# [TP312097]). The protein was produced from HEK293T cells transfected with EPS15 cDNA clone (Cat# [RC212097]) using MegaTran 2.0 (Cat# [TT210002]).