

Product datasheet for **TP312095L**

EPB41 (NM_203342) Human Recombinant Protein

Product data:

Product Type:	Recombinant Proteins
Description:	Recombinant protein of human erythrocyte membrane protein band 4.1 (elliptocytosis 1, RH-linked) (EPB41), transcript variant 2, 1 mg
Species:	Human
Expression Host:	HEK293T
Expression cDNA Clone or AA Sequence:	>RC212095 representing NM_203342 Red =Cloning site Green =Tags(s)

MHCKVSLDDTVYECVVEKHAKGQDLLKRVCEHLNLLLEEDYFGLAIWDNATSKTWLDSAKEIKKQVRGVP
WNFTFNVKFYPPDPAQLTEDITRYYLCLQLRQDIVAGRLPCSFATLALLGSYTIQSELGDYDPELHGVDY
VSDFKLAPNQTKLEEKVMELHKSYSRMPAQADLEFLENAKKLSMYGVDLHKAKDLEGVDIILGVCSSG
LLVYKDKLRINRFPWPVKVLKISYKRSSFFIKIRPGEQEYESTIGFKLPSYRAAKKLWKVCVEHHTFFRL
TSTDITPKSKFLALGSKFRYSGRTQAQTRQASALIDRPAPHFERTASKRASRLDGAAVDSADRSPRT
SAPAITQGQVAEGGVLDAKKTWVPAQKETVKAEVKKEDEPPEQAEPEPEAWKVEKTHIEVTVPTSN
GDQTQKKRERLDGENIYIRHSNLMLEDLDKSQEEIKKHHASISELKNFMESVPEPRPSEWDKRLSTHSP
FRTLNINGQIPTGEGPPLVKTQTVTISDNANAVKSEIPTKDVPIVHTETKTITYEAAQTDDNSGDLDPGV
LLTAQTITSETPSSTTTTQITKTVKGGISETRIEKRIVITGDADIDHDQVLVQAIKEAKEQHPDMSVTKV
VHQETEIADE

TRTRPLEQKLISEEDLAANDILDYKDDDDKV

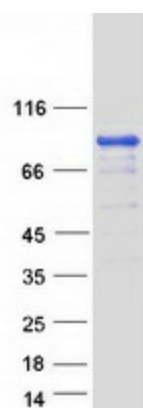
Tag:	C-Myc/DDK
Predicted MW:	71.8 kDa
Concentration:	>0.05 µg/µL as determined by microplate BCA method
Purity:	> 80% as determined by SDS-PAGE and Coomassie blue staining
Buffer:	25 mM Tris-HCl, 100 mM glycine, pH 7.3, 10% glycerol
Preparation:	Recombinant protein was captured through anti-DDK affinity column followed by conventional chromatography steps.
Note:	For testing in cell culture applications, please filter before use. Note that you may experience some loss of protein during the filtration process.
Storage:	Store at -80°C.



[View online »](#)

Stability:	Stable for 12 months from the date of receipt of the product under proper storage and handling conditions. Avoid repeated freeze-thaw cycles.
RefSeq:	NP_976217
Locus ID:	2035
UniProt ID:	P11171 , Q59F12
RefSeq Size:	6369
Cytogenetics:	1p35.3
RefSeq ORF:	1923
Synonyms:	4.1R; EL1; HE
Summary:	The protein encoded by this gene, together with spectrin and actin, constitute the red cell membrane cytoskeletal network. This complex plays a critical role in erythrocyte shape and deformability. Mutations in this gene are associated with type 1 elliptocytosis (EL1). Alternatively spliced transcript variants encoding different isoforms have been described for this gene.[provided by RefSeq, Oct 2009]
Protein Families:	Druggable Genome
Protein Pathways:	Tight junction

Product images:



Coomassie blue staining of purified EPB41 protein (Cat# [TP312095]). The protein was produced from HEK293T cells transfected with EPB41 cDNA clone (Cat# [RC212095]) using MegaTran 2.0 (Cat# [TT210002]).