

Product datasheet for TP312056

beta Catenin (CTNNB1) (NM_001098209) Human Recombinant Protein

Product data:

Product Type: Recombinant Proteins

Description: Recombinant protein of human catenin (cadherin-associated protein), beta 1, 88kDa (CTNNB1)

Species: Human

Expression Host: HEK293T

Expression cDNA >RC212056 representing NM_001098209

Clone or AA **Red**=Cloning site **Green**=Tags(s)

Sequence:

MATQADLMELDMAMEPDRKAAVSHWQQQSYLDSGIHSGATTTAPSLSGKGNPEEEDVDTSQVLYEWEQGF
SQSFTQEQVADIDGQYAMTRAQRVRAAMFPETLDEGMQIPSTQFDDAAHPTNVQRLAEPSQMLKHAVNLI
NYQDDAELATRAIPELTKLLNDEDQVVVNKAAMVHQLSKKEASRHAIMRSPQMVSIAIVRTMQNTNDVET
ARCTAGTLHNLSSHREGLLAIFKSGGIPALVKMLGSPVDSVLFYAITTLHNLHLLHQEGAKMAVRLAGGLQ
KMVALLNKTNVKFLAITDCLQILAYGNQESKLIILASGGPQALVNIMRTYTYEKLLWTTSRVLKVLVSV
SSNKPAIVEAGGMQALGLHLTDPSQRLVQNCLWTLRNLSDAATKQEGMEGLLGLTLVQLLGSDDINVTCA
AGILSNLTCNNYKNKMMVCQVGGIEALVRTVLRAGDREDITEPAICALRHLTSRHRQEAEMAQNAVRLHYG
LPVVVKLLHPPSHWPLIKATVGLIRNLALCPANHAPLREQGAIPRLVQLLVRAHQDTQRRTSMGGTQQQF
VEGVRMEEIVEGCTGALHILARDVHNRIVIRGLNTIPLFVQLLYSPIENIQRVAAGVLCELAQDKEAAEA
IEAEGATAPLTELHNRNEGVATYAAAVLFRMSDKPQDYKKRLSVELTSSLFRTEPMAWNETADLGLDI
GAQGEPLGYRQDDPSYRSFHSGGYGQDALGMDPMMEHMGGHHPGADYPVDGLPDLGHAQDLMDGLPPGD
SNQLAWFDTDL

TRTRPLEQKLISEEDLAANDILDYKDDDDKV

Tag: C-Myc/DDK

Predicted MW: 85.3 kDa

Concentration: >50 ug/mL as determined by microplate BCA method

Purity: > 80% as determined by SDS-PAGE and Coomassie blue staining

Buffer: 25 mM Tris.HCl, pH 7.3, 100 mM glycine, 10% glycerol

Preparation: Recombinant protein was captured through anti-DDK affinity column followed by conventional chromatography steps.

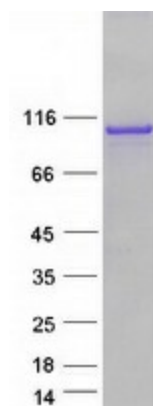
Storage: Store at -80°C.



[View online »](#)

Stability:	Stable for 12 months from the date of receipt of the product under proper storage and handling conditions. Avoid repeated freeze-thaw cycles.
RefSeq:	NP_001091679
Locus ID:	1499
UniProt ID:	P35222 , A0A024R2Q3
RefSeq Size:	3415
Cytogenetics:	3p22.1
RefSeq ORF:	2343
Synonyms:	armadillo; CTNNB; EVR7; MRD19; NEDSDV
Summary:	The protein encoded by this gene is part of a complex of proteins that constitute adherens junctions (AJs). AJs are necessary for the creation and maintenance of epithelial cell layers by regulating cell growth and adhesion between cells. The encoded protein also anchors the actin cytoskeleton and may be responsible for transmitting the contact inhibition signal that causes cells to stop dividing once the epithelial sheet is complete. Finally, this protein binds to the product of the APC gene, which is mutated in adenomatous polyposis of the colon. Mutations in this gene are a cause of colorectal cancer (CRC), pilomatixoma (PTR), medulloblastoma (MDB), and ovarian cancer. Alternative splicing results in multiple transcript variants. [provided by RefSeq, Aug 2016]
Protein Families:	Druggable Genome, ES Cell Differentiation/IPS, Transcription Factors
Protein Pathways:	Adherens junction, Arrhythmogenic right ventricular cardiomyopathy (ARVC), Basal cell carcinoma, Colorectal cancer, Endometrial cancer, Focal adhesion, Leukocyte transendothelial migration, Melanogenesis, Pathogenic Escherichia coli infection, Pathways in cancer, Prostate cancer, Thyroid cancer, Tight junction, Wnt signaling pathway

Product images:



Coomassie blue staining of purified CTNNB1 protein (Cat# TP312056). The protein was produced from HEK293T cells transfected with CTNNB1 cDNA clone (Cat# [RC212056]) using MegaTran 2.0 (Cat# [TT210002]).