

## Product datasheet for **TP312051L**

### **PAX2 (NM\_003987) Human Recombinant Protein**

#### Product data:

**Product Type:** Recombinant Proteins  
**Description:** Recombinant protein of human paired box 2 (PAX2), transcript variant a, 1 mg  
**Species:** Human  
**Expression Host:** HEK293T  
**Expression cDNA** >RC212051 representing NM\_003987  
**Clone or AA Sequence:** **Red**=Cloning site **Green**=Tags(s)

MDMHCKADPFSAMHPGHGGVNLGGVFNVRPLPDVWRQRIVELAHQGVPCDISRQLRVSHGCVSKILG  
RYYETGSIKPGVIGGSKPKVATPKVVDKIAEYKRQNPTMFAWEIRDLLAEGICDNDTPVSVSSINRIIR  
TKVQQPFHPTPDGAGTGVTAPGHTIVPSTASPPVSSASNDPVGSYSINGILGIPRSNGEKRRKRDVEVYT  
DPAHIRGGGLHLVWTLRDVSEGSVPNGDSQSGVDSLRLKHLRADTFTQQLEALDRVFERPSYDPVFQAS  
EHIKSEQGNEYSLPALTPGLDEVKSSLSASTNPELGSNVSGTQTPVVTGRDMASSTLPGYPPHPVPTGQ  
GSYPTSTLAGMVPVGFSEFSGNPNYSHPQYTAYNEAWRFSNPALLSSPYYSAPRSAPAAAAAYDRH

**TRTRPLEQKLISEEDLAANDILDYKDDDDKV**

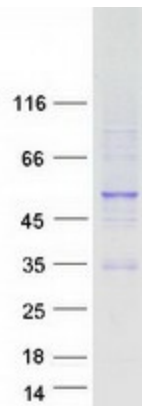
**Tag:** C-Myc/DDK  
**Predicted MW:** 44.5 kDa  
**Concentration:** >0.05 µg/µL as determined by microplate BCA method  
**Purity:** > 80% as determined by SDS-PAGE and Coomassie blue staining  
**Buffer:** 25 mM Tris-HCl, 100 mM glycine, pH 7.3, 10% glycerol  
**Preparation:** Recombinant protein was captured through anti-DDK affinity column followed by conventional chromatography steps.  
**Note:** For testing in cell culture applications, please filter before use. Note that you may experience some loss of protein during the filtration process.  
**Storage:** Store at -80°C.  
**Stability:** Stable for 12 months from the date of receipt of the product under proper storage and handling conditions. Avoid repeated freeze-thaw cycles.  
**RefSeq:** [NP\\_003978](#)  
**Locus ID:** 5076



[View online »](#)

UniProt ID:	<a href="#">Q02962</a>
RefSeq Size:	4276
Cytogenetics:	10q24.31
RefSeq ORF:	1248
Synonyms:	FSGS7; PAPRS
Summary:	<p>PAX2 encodes paired box gene 2, one of many human homologues of the <i>Drosophila melanogaster</i> gene <i>prd</i>. The central feature of this transcription factor gene family is the conserved DNA-binding paired box domain. PAX2 is believed to be a target of transcriptional suppression by the tumor suppressor gene WT1. Mutations within PAX2 have been shown to result in optic nerve colobomas and renal hypoplasia. Alternative splicing of this gene results in multiple transcript variants. [provided by RefSeq, Dec 2014]</p>
Protein Families:	Druggable Genome

### Product images:



Coomassie blue staining of purified PAX2 protein (Cat# [TP312051]). The protein was produced from HEK293T cells transfected with PAX2 cDNA clone (Cat# [RC212051]) using MegaTran 2.0 (Cat# [TT210002]).