

Product datasheet for TP312042M

ARHGEF10L (NM_018125) Human Recombinant Protein

Product data:

Product Type:	Recombinant Proteins
Description:	Recombinant protein of human Rho guanine nucleotide exchange factor (GEF) 10-like (ARHGEF10L), transcript variant 1, 100 µg
Species:	Human
Expression Host:	HEK293T
Expression cDNA Clone or AA Sequence:	>RC212042 representing NM_018125 Red=Cloning site Green=Tags(s)

MASSNPPQPAIGDQLVPGVPGPSSEAEDDPGEAFEFDDSDDEEDTSAALGVPSLAPERDTPPLIHLDSP
IPVTDPPDAAAPPGTGVPWVWSNGDAADAASFSGARHSSWKRKSSRRIDRFTFPALEEDVIYDDVPCESPD
AHQPGAERNLLYEDAHRAGAPRQAEDLGWSSSEFESYSEDSGEEAKPEVEVEPAKHRVFSQPKLSPDLTR
LKERYARTKRDILALRVGGRDMQELKHKYDCKMTQLMKAASKGTDGKLEKTRMAVMRKVSVFLHRKDVLDG
SEEDMGLLEVSVDIKPPAPELGPMPPEGLSPQQVRRHILGSIVQSEGSYVESLKRILQDYRNPLMEME
PKALSARKCQVFFRVKEILHCHSMFQIALSSRVAEWDSTEKIGDLFVASFSKSMVLDVYSYVNNFTSA
MSIIKKACLKPAFLEFLKRRQVCSPPDRVTLYGLMVKPIQRFQFILLQDMLKNTPRGHPDRLSLQAL
TELETLAEKLEQKRLADQVAEIQQLTKSVSDRSSLNKLTTSGQRQLLLCETLTETVYGDRGQLIKSKER
RVFLLNDMLVCANINFKAPANHRGQLEISSLVPLGPKYVVKWNTALPQVQVVEVGQDGGTYDKDNVLIQHS
GAKKASASGQAQNKVYLGPPRLFQELQDLQDLAVVEQITLLISTLHGTYQNLNMTVAQDWCLALQRLMR
VKEEIIHSANKCRLRLLLPGKPKDGRPISFMVVFITPNPLSKISWVNRLHLAKIGLREENQPGWLCPDE
DKKSKAPFWCPIACCIPAFSSRALSLLQALGVHSPVNCPLLGFSAVSTSLPQGYLWVGGGQEGAGGQVE
IFSLNRPSRPTVKSFLAAPVLCMEYIPELEEEAESRDESPTVADPSATVHPTICLGLQDGSILLYSSVD
TGTQCLVSCRSPGLQPVLCRLHSPFHLLAGLQDGTAAAYPRTSGGVLDWLESPPVCLTVGPGPVRTLLSL
EDAVWASCGPRVTLEATTLQPQSFQEAHQDEAVSVTHMVKAGSGVWMAFSSGTSIRLFHTETLEHLQEI
NIATRTRTFLLPQKHLKCVTSLICQGLLWVGTDQGVIVLLVPVPRLEGIPKITGKGMVSLNGHCGPVAFLA
VATSILAPDILRSDQEEAEGPRAEEDKPDGQAHEPMPDHSVGRELTRKKGILLQYRLRSTAHLPGPLLSM
REPAPADGAALHSEEDGSIYEMADDPDIWVRSRPCARDAHRKEICSVAIISGGQGYRNFSGSALGSSGRQ
APCGETDSTLLIWQVPLML

TRTRPLEQKLISEEDLAANDILDYKDDDDKV

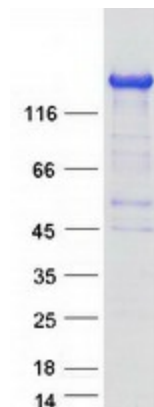
Tag:	C-Myc/DDK
Predicted MW:	140.2 kDa



[View online »](#)

Concentration:	>0.05 µg/µL as determined by microplate BCA method
Purity:	> 80% as determined by SDS-PAGE and Coomassie blue staining
Buffer:	25 mM Tris-HCl, 100 mM glycine, pH 7.3, 10% glycerol
Preparation:	Recombinant protein was captured through anti-DDK affinity column followed by conventional chromatography steps.
Note:	For testing in cell culture applications, please filter before use. Note that you may experience some loss of protein during the filtration process.
Storage:	Store at -80°C.
Stability:	Stable for 12 months from the date of receipt of the product under proper storage and handling conditions. Avoid repeated freeze-thaw cycles.
RefSeq:	NP_060595
Locus ID:	55160
UniProt ID:	Q9HCE6
RefSeq Size:	4502
Cytogenetics:	1p36.13
RefSeq ORF:	3837
Synonyms:	GrinchGEF
Summary:	This gene belongs to the RhoGEF subfamily of RhoGTPases. Members of this subfamily are activated by specific guanine nucleotide exchange factors (GEFs) and are involved in signal transduction. The encoded protein shows cytosolic distribution. Alternative splicing results in multiple transcript variants. [provided by RefSeq, Jun 2016]

Product images:



Coomassie blue staining of purified ARHGEF10L protein (Cat# [TP312042]). The protein was produced from HEK293T cells transfected with ARHGEF10L cDNA clone (Cat# [RC212042]) using MegaTran 2.0 (Cat# [TT210002]).