

## Product datasheet for TP312042L

### ARHGEF10L (NM\_018125) Human Recombinant Protein

#### Product data:

|                                       |   |
|---------------------------------------|---|
| Product Type:                         | Recombinant Proteins  |
| Description:                          | Recombinant protein of human Rho guanine nucleotide exchange factor (GEF) 10-like (ARHGEF10L), transcript variant 1, 1 mg |
| Species:                              | Human   |
| Expression Host:                      | HEK293T   |
| Expression cDNA Clone or AA Sequence: | >RC212042 representing NM_018125<br>Red=Cloning site Green=Tags(s)  |

MASSNPPQPAIGDQLVPGVPGPSSEAEDDPGEAFEFDDSDDEEDTSAALGVPSLAPERDTPPLIHLDSP  
IPVTDPDPAAPPGTGVPWVNSGDAADAASFSGARHSSWKRKSSRRIDRFTFPALEEDVIYDDVPCESPD  
AHQPGAERNLLYEDAHRAGAPRQAEDLGWSSSEFESYSEDSGEEAKPEVEVEPAKHRVFSQPKLSPDLTR  
LKERYARTKRDILALRVGGRDMQELKHKYDCKMTQLMKAASKGTDGLEKTRMAVMRKVSFLHRKDVLDG  
SEEDMGLLEVSVDIKPPAPELGPMPPEGLSPQQVRRHILGSIVQSEGSYVESLKRILQDYRNPLMEME  
PKALSARKCQVFFRVKEILHCHSMFQIALSSRVAEWDSTEKIGDLFVASFSKSMVLDVYSYVNNFTSA  
MSIIKACLTKPAFLEFLKRRQVCSPPDRVTLYGLMVKPIQRFQFILLQDMLKNTPRGHPDRLSLQAL  
TELETLAEKLEQKRLADQVAEIQQLTKSVSDRSSLNKLTTSGQRQLLLCETLTETVYGDRGQLIKSKER  
RVFLLNDMLVCANINFKAPANHRGQLEISSLVPLGPKYVVKWNTALPQVQVEVGQDGGTYDKDNVLIQHS  
GAKKASASGQAQNKVYLGPPRLFQELQDLQDLAVVEQITLLISTLHGTYQNLNMTVAQDWCLALQRLMR  
VKEEIIHSANKCRLRLLLPGKPKDGRPISFMVVFITPNPLSKISWVNRLHLAKIGLREENQPGWLCPDE  
DKKSKAPFWCPILACCIPAFSSRALSLLQALGVHSPVNCPLLGFSAVSTSLPQGYLWVGGGQEGAGGQVE  
IFSLNRPSRPTVKSFLAAPVLCMEYIPELEEEAESRDESPTVADPSATVHPTICLGLQDGSILLYSSVD  
TGTQCLVSCRSPGLQPVLCRLHSPFHLLAGLQDGTAAAYPRTSGGVLDWLESPPVCLTVGPGPVRTLLSL  
EDAVWASCGPRVTLEATTLQPQSFQEAHQDEAVSVTHMVKAGSGVWMAFSSGTSIRLFHTETLEHLQEI  
NIATRTRTFLLPQKHLCVTSLICQGLLWVGTDQGVIVLLPVRLEGIPKITGKGMVSLNGHCGPVAFLA  
VATSILAPDILRSDQEEAEGPRAEEDKPDGQAHEPMPDSHVGRELTRKKGILLQYRLRSTAHLPGPLLSM  
REPAPADGAALHSEEDGSIYEMADDPDIWVRSRPCARDAHRKEICSVAIISGGQGYRNFSGSALGSSGRQ  
APCGETDSTLLIWQVPLML

TRTRPLEQKLISEEDLAANDILDYKDDDDKV

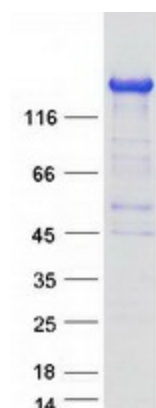
|               |           |
|---------------|-----------|
| Tag:          | C-Myc/DDK |
| Predicted MW: | 140.2 kDa |



[View online »](#)

|                       |   |
|-----------------------|---|
| <b>Concentration:</b> | >0.05 µg/µL as determined by microplate BCA method  |
| <b>Purity:</b>        | > 80% as determined by SDS-PAGE and Coomassie blue staining   |
| <b>Buffer:</b>        | 25 mM Tris-HCl, 100 mM glycine, pH 7.3, 10% glycerol  |
| <b>Preparation:</b>   | Recombinant protein was captured through anti-DDK affinity column followed by conventional chromatography steps.  |
| <b>Note:</b>          | For testing in cell culture applications, please filter before use. Note that you may experience some loss of protein during the filtration process.  |
| <b>Storage:</b>       | Store at -80°C.   |
| <b>Stability:</b>     | Stable for 12 months from the date of receipt of the product under proper storage and handling conditions. Avoid repeated freeze-thaw cycles.   |
| <b>RefSeq:</b>        | <a href="#">NP_060595</a>   |
| <b>Locus ID:</b>      | 55160   |
| <b>UniProt ID:</b>    | <a href="#">Q9HCE6</a>  |
| <b>RefSeq Size:</b>   | 4502  |
| <b>Cytogenetics:</b>  | 1p36.13   |
| <b>RefSeq ORF:</b>    | 3837  |
| <b>Synonyms:</b>      | GrinchGEF   |
| <b>Summary:</b>       | This gene belongs to the RhoGEF subfamily of RhoGTPases. Members of this subfamily are activated by specific guanine nucleotide exchange factors (GEFs) and are involved in signal transduction. The encoded protein shows cytosolic distribution. Alternative splicing results in multiple transcript variants. [provided by RefSeq, Jun 2016] |

### Product images:



Coomassie blue staining of purified ARHGEF10L protein (Cat# [TP312042]). The protein was produced from HEK293T cells transfected with ARHGEF10L cDNA clone (Cat# [RC212042]) using MegaTran 2.0 (Cat# [TT210002]).