

## Product datasheet for **TP312038L**

### SULT1A1 (NM\_177529) Human Recombinant Protein

#### Product data:

**Product Type:** Recombinant Proteins

**Description:** Recombinant protein of human sulfotransferase family, cytosolic, 1A, phenol-preferring, member 1 (SULT1A1), transcript variant 2, 1 mg

**Species:** Human

**Expression Host:** HEK293T

**Expression cDNA** >RC212038 protein sequence

**Clone or AA Sequence:** Red=Cloning site Green=Tags(s)

MELIQDTSRPPLEYVKGVPLIKYFAEALGPLQSFQARPDDLSTYPKSGTTWVSQILDMIYQGGDLEKC  
HRAPIFMRVPFLEFKAPGIPSGMETLKDTPAPRLLKTHLPLALLPQTLLDQKVKVYVARNADVAVSYY  
HFYHMAKVHPEPGTWDSFLEKFMVGEVSYGSWYQHVQEWELSRTHPVLYLFYEDMKENPKREIQKILEF  
VGRSLPEETVDFMVQHTSFKEMKKNPMTNYTTPQEFMDHSISPFMRKGMAGDWKTTFTVAQNERFDADY  
AEKMAGCSLSFRSEL

TRTRPLEQKLISEEDLAANDILDYKDDDDKV

**Tag:** C-Myc/DDK

**Predicted MW:** 34 kDa

**Concentration:** >0.05 µg/µL as determined by microplate BCA method

**Purity:** > 80% as determined by SDS-PAGE and Coomassie blue staining

**Buffer:** 25 mM Tris-HCl, 100 mM glycine, pH 7.3, 10% glycerol

**Preparation:** Recombinant protein was captured through anti-DDK affinity column followed by conventional chromatography steps.

**Note:** For testing in cell culture applications, please filter before use. Note that you may experience some loss of protein during the filtration process.

**Storage:** Store at -80°C.

**Stability:** Stable for 12 months from the date of receipt of the product under proper storage and handling conditions. Avoid repeated freeze-thaw cycles.

**RefSeq:** [NP\\_803565](#)

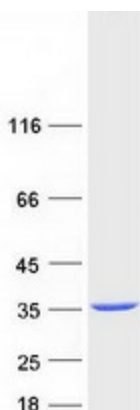
**Locus ID:** 6817



[View online »](#)

UniProt ID:	<a href="#">P50225</a>
RefSeq Size:	1285
Cytogenetics:	16p11.2
RefSeq ORF:	885
Synonyms:	HAST1/HAST2; P-PST; P-PST 1; PST; ST1A1; ST1A3; STP; STP1; ts-PST; TSPST1
Summary:	Sulfotransferase enzymes catalyze the sulfate conjugation of many hormones, neurotransmitters, drugs, and xenobiotic compounds. These cytosolic enzymes are different in their tissue distributions and substrate specificities. The gene structure (number and length of exons) is similar among family members. This gene encodes one of two phenol sulfotransferases with thermostable enzyme activity. Multiple alternatively spliced variants that encode two isoforms have been identified for this gene. [provided by RefSeq, Jul 2008]
Protein Pathways:	Sulfur metabolism

### Product images:



Coomassie blue staining of purified SULT1A1 protein (Cat# [TP312038]). The protein was produced from HEK293T cells transfected with SULT1A1 cDNA clone (Cat# [RC212038]) using MegaTran 2.0 (Cat# [TT210002]).