

Product datasheet for **TP312030L**

DEFB125 (NM_153325) Human Recombinant Protein

Product data:

| | |
|---------------------------------------|--|
| Product Type: | Recombinant Proteins |
| Description: | Recombinant protein of human defensin, beta 125 (DEFB125), 1 mg |
| Species: | Human |
| Expression Host: | HEK293T |
| Expression cDNA Clone or AA Sequence: | >RC212030 protein sequence Red =Cloning site Green =Tags(s) |
| | MNILMLTFIICGLLTRVTKGSFEPQKCWKNNVGHCRRLDTERYILLCRNKLSCCISISHEYTRRPAF PVIHLEDITLDYSDVDSFTGSPVSMNLNLIITFDTTKFGETMTPETNTPETTMPPSEATTPETTMPPSETA TSETMPPPSQTALTHN |
| | TRTRPLEQKLISEEDLAANDILDYKDDDDKV |
| Tag: | C-Myc/DDK |
| Predicted MW: | 15.3 kDa |
| Concentration: | >0.05 µg/µL as determined by microplate BCA method |
| Purity: | > 80% as determined by SDS-PAGE and Coomassie blue staining |
| Buffer: | 25 mM Tris-HCl, 100 mM glycine, pH 7.3, 10% glycerol |
| Preparation: | Recombinant protein was captured through anti-DDK affinity column followed by conventional chromatography steps. |
| Note: | For testing in cell culture applications, please filter before use. Note that you may experience some loss of protein during the filtration process. |
| Storage: | Store at -80°C. |
| Stability: | Stable for 12 months from the date of receipt of the product under proper storage and handling conditions. Avoid repeated freeze-thaw cycles. |
| RefSeq: | NP_697020 |
| Locus ID: | 245938 |
| UniProt ID: | Q8N687 , B2R4E8 |
| RefSeq Size: | 709 |



[View online »](#)

Cytogenetics: 20p13

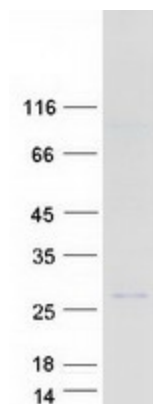
RefSeq ORF: 468

Synonyms: DEFB-25

Summary: Defensins are cysteine-rich cationic polypeptides that are important in the host immunologic response to invading microorganisms. The antimicrobial protein encoded by this gene is secreted and is a member of the beta defensin protein family. Beta defensin genes are found in several clusters throughout the genome, with this gene mapping to a cluster at 20p13. [provided by RefSeq, Nov 2014]

Protein Families: Secreted Protein

Product images:



Coomassie blue staining of purified DEFB125 protein (Cat# [TP312030]). The protein was produced from HEK293T cells transfected with DEFB125 cDNA clone (Cat# [RC212030]) using MegaTran 2.0 (Cat# [TT210002]).