

Product datasheet for **TP312029M**

AMELY (NM_001143) Human Recombinant Protein

Product data:

Product Type: Recombinant Proteins

Description: Recombinant protein of human amelogenin, Y-linked (AMELY), 100 µg

Species: Human

Expression Host: HEK293T

Expression cDNA >RC212029 representing NM_001143

Clone or AA Red=Cloning site Green=Tags(s)

Sequence:

MGTWILFACLVGAAFAMPLPPHPGHPGYINFSYEVLTPWKWYQSMIRPPYSSYGYEPMGGWLHHQIIPVV
SQQHPLTHTLQSHHHIPVWPAQQPRVRQQALMPVPGQQSMTPTQHHQPNLPLPAQQPFQPQPVPQPHQP
MQPQPVPQPMQPLLQPPLPPMFPLRPLPILPDLHLEAWPATDKTKQEEVD

TRTRPLEQKLISEEDLAANDILDYKDDDDKV

Tag: C-Myc/DDK

Predicted MW: 20 kDa

Concentration: >0.05 µg/µL as determined by microplate BCA method

Purity: > 80% as determined by SDS-PAGE and Coomassie blue staining

Buffer: 25 mM Tris-HCl, 100 mM glycine, pH 7.3, 10% glycerol

Preparation: Recombinant protein was captured through anti-DDK affinity column followed by conventional chromatography steps.

Note: For testing in cell culture applications, please filter before use. Note that you may experience some loss of protein during the filtration process.

Storage: Store at -80°C.

Stability: Stable for 12 months from the date of receipt of the product under proper storage and handling conditions. Avoid repeated freeze-thaw cycles.

RefSeq: [NP_001134](#)

Locus ID: 266

UniProt ID: [Q99218](#)

RefSeq Size: 802



[View online »](#)

Cytogenetics: Yp11.2

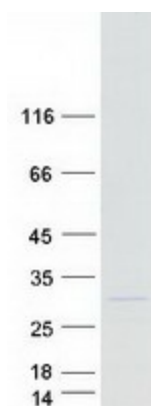
RefSeq ORF: 576

Synonyms: AMGL; AMGY

Summary: This gene encodes a member of the amelogenin family of extracellular matrix proteins. Amelogenins are involved in biomineralization during tooth enamel development. Mutations in a related gene on chromosome X cause X-linked amelogenesis imperfecta. [provided by RefSeq, Jul 2008]

Protein Families: Secreted Protein

Product images:



Coomassie blue staining of purified AMELY protein (Cat# [TP312029]). The protein was produced from HEK293T cells transfected with AMELY cDNA clone (Cat# [RC212029]) using MegaTran 2.0 (Cat# [TT210002]).