

## Product datasheet for **TP312024L**

### MTMR1 (NM\_003828) Human Recombinant Protein

#### Product data:

Product Type:	Recombinant Proteins
Description:	Recombinant protein of human myotubularin related protein 1 (MTMR1), 1 mg
Species:	Human
Expression Host:	HEK293T
Expression cDNA Clone or AA Sequence:	>RC212024 representing NM_003828 <b>Red</b> =Cloning site <b>Green</b> =Tags(s)

MDRPAAAAAAGCEGGGGPNPGPAGGRRPPRAAGGATAGSRQPSVETLDSPTGSHVEWCKQLIAATISSQI  
SGSVTSENVSRDYKALRDGNKLAQMEEAPLFPGESIKAIVKDVMYICPFMGAVSGTLTVTDFKLYFKNVE  
RDPHFILDVPLGVISRVEKIGAQSHGDNSCGIEIVCKDMRNLRLAYKQEEQSKLGIFENLNKHAFPLSNG  
QALFAFSYKEKFPINGWKVYDPVSEYKRQGLPNESWKISKINSNYEFCDTYPAIIVVPTSVKDDDLSKVA  
AFRAKGRVPVLSWIHPESQATITRCSQPLVGPNDKRCKEDEKYLQTIMDANAQSHKLIIFDARQNSVADT  
NKTKGGGYESEAYPNAELVFLEIHNIHVMRESLRKLKEIVYPSIDARWLSNVDGTHWLEYIRMLLAGA  
VRIADKIESGKTSVVVHCSDGWDRTAQLTSLAMLMLDSYYRTIKGFETLVEKEWISFGHRFALRVGHGND  
NHADADRSPIFLQFVDCVWQMTRQFPFAFELFLITILDHLYSCLFGTFLCNCEQQRKFEDVYTKTIS  
LWSYINSQLDEFSNPFVNYENHVLYPVASLSHLELWVNYVVRWNPRMRPQMPIHQNLKELLAVRAELQK  
RVEGLQREVATRAVSSSSSERGSSPSHSATSVAHTSV

**TRTRPLEQKLISEEDLAANDILDYKDDDDKV**

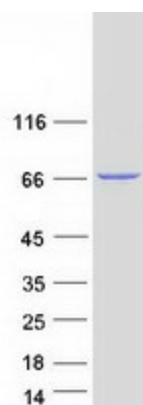
Tag:	C-Myc/DDK
Predicted MW:	74.5 kDa
Concentration:	>0.05 µg/µL as determined by microplate BCA method
Purity:	> 80% as determined by SDS-PAGE and Coomassie blue staining
Buffer:	25 mM Tris-HCl, 100 mM glycine, pH 7.3, 10% glycerol
Preparation:	Recombinant protein was captured through anti-DDK affinity column followed by conventional chromatography steps.
Note:	For testing in cell culture applications, please filter before use. Note that you may experience some loss of protein during the filtration process.
Storage:	Store at -80°C.



[View online »](#)

<b>Stability:</b>	Stable for 12 months from the date of receipt of the product under proper storage and handling conditions. Avoid repeated freeze-thaw cycles.
<b>RefSeq:</b>	<a href="#">NP_003819</a>
<b>Locus ID:</b>	8776
<b>UniProt ID:</b>	<a href="#">Q13613</a> , <a href="#">Q8NEC6</a>
<b>RefSeq Size:</b>	2754
<b>Cytogenetics:</b>	Xq28
<b>RefSeq ORF:</b>	1995
<b>Summary:</b>	This gene encodes a member of the myotubularin related family of proteins. Members of this family contain the consensus sequence for the active site of protein tyrosine phosphatases. Alternatively spliced variants have been described but their biological validity has not been determined. [provided by RefSeq, Jul 2008]
<b>Protein Families:</b>	Druggable Genome, Phosphatase
<b>Protein Pathways:</b>	Fructose and mannose metabolism, Metabolic pathways, Riboflavin metabolism, Thiamine metabolism

### Product images:



Coomassie blue staining of purified MTMR1 protein (Cat# [TP312024]). The protein was produced from HEK293T cells transfected with MTMR1 cDNA clone (Cat# [RC212024]) using MegaTran 2.0 (Cat# [TT210002]).