

Product datasheet for **TP312006M**

PIGR (NM_002644) Human Recombinant Protein

Product data:

Product Type:	Recombinant Proteins
Description:	Recombinant protein of human polymeric immunoglobulin receptor (PIGR), 100 µg
Species:	Human
Expression Host:	HEK293T
Expression cDNA	>RC212006 representing NM_002644
Clone or AA Sequence:	Red=Cloning site Green=Tags(s)

MLLFVLTCLLAVFPAISTKSPIFGPEEVNSVEGNSVSITCYPPPTSVNRHTRKYWCRQGARGGCITLISS
EGYVSSKYAGRANLTNFPENGTFFVNIAQLSQDDSGRYKCGLGINSRGLSFDVSLEVSQGPGLLNDTKVY
TVDLGRVTINCPFKTENAQRKRSLYKQIGLYPVLVIDSSGYVNPNYTGRIRLDIQGTGQLLFSVWINQL
RLSDAGQYLCQAGDDSNKKNADLQVLKPEPELVYEDLRGSVTFHCALGPEVANVAKFLCRQSSGENCD
VVNTLGKRAPAFEGRILLNPQDKDGSFSVITGLRKEDAGRYLCGAHSDGQLQEGSPIQAWQLFVNEES
TIPRSPTVVKGVAGGSVAVLCPYNRKEKSIKYWCLWEGAQNGRCPLLVDSEGWVKAQYEGRLSLLLEPG
NGTFTVILNQLTSRDAGFYWCLTNGDTLWRTTVEIKIEGEPNLKVPGNVTAVLGETLKVPCHPCKFSS
YEKYWCKWNNTGCQALPSQDEGPSKAFVNCDENRSLVSLTLNLVTRADEGWYWCGVKQGHFYGETAAVYV
AVEERKAAGSRDVS LAKADAAPDEKVLDSGFREIENKAIQDPRLF AEEKAVADTRDQADGSRASVDSGSS
EEQGSSRALVSTLVPLGLVLAVGAVAVGVARARHRKNVDRVSIRSIRYRTDISMSDFENSREFGANDNMGA
SSITQETSLGGKEEFVATTESTTETKEPKKAKRSSKEEAEMAYKDFLLQSSTVAAEAQDGPQEA

TRTRPLEQKLISEEDLAANDILDYKDDDDKV

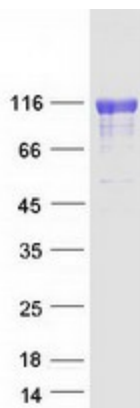
Tag:	C-Myc/DDK
Predicted MW:	81.3 kDa
Concentration:	>0.05 µg/µL as determined by microplate BCA method
Purity:	> 80% as determined by SDS-PAGE and Coomassie blue staining
Buffer:	25 mM Tris-HCl, 100 mM glycine, pH 7.3, 10% glycerol
Preparation:	Recombinant protein was captured through anti-DDK affinity column followed by conventional chromatography steps.
Note:	For testing in cell culture applications, please filter before use. Note that you may experience some loss of protein during the filtration process.
Storage:	Store at -80°C.



[View online »](#)

Stability:	Stable for 12 months from the date of receipt of the product under proper storage and handling conditions. Avoid repeated freeze-thaw cycles.
RefSeq:	NP_002635
Locus ID:	5284
UniProt ID:	P01833
RefSeq Size:	4266
Cytogenetics:	1q32.1
RefSeq ORF:	2292
Summary:	This gene is a member of the immunoglobulin superfamily. The encoded poly-Ig receptor binds polymeric immunoglobulin molecules at the basolateral surface of epithelial cells; the complex is then transported across the cell to be secreted at the apical surface. A significant association was found between immunoglobulin A nephropathy and several SNPs in this gene.[provided by RefSeq, Sep 2009]
Protein Families:	Druggable Genome, Secreted Protein, Transmembrane

Product images:



Coomassie blue staining of purified PIGR protein (Cat# [TP312006]). The protein was produced from HEK293T cells transfected with PIGR cDNA clone (Cat# [RC212006]) using MegaTran 2.0 (Cat# [TT210002]).