

## Product datasheet for TP311995

### PRAS40 (AKT1S1) (NM\_001098632) Human Recombinant Protein

#### Product data:

Product Type:	Recombinant Proteins
Description:	Recombinant protein of human AKT1 substrate 1 (proline-rich) (AKT1S1), transcript variant 2, 20 µg
Species:	Human
Expression Host:	HEK293T
Expression cDNA Clone or AA Sequence:	>RC211995 representing NM_001098632 Red=Cloning site Green=Tags(s)

MASGRPEELWEAVVGAERFRARTGTELVLLTAAPPPPPRPGPCAYAAHGRGALAEAARRCLHDIALAHR  
AATAARPPAPPAPQPPSPTSPRRPTLAREDNEEDEDEPTETETSQEQLGISDNGGLFVMDDEATLQDL  
PPFCESDPESTDDGSLSEETPAGPPTCSVPPASALPTQQYAKSLPVSVVWGFKEKRTEARSSDEENGPP  
SSPDLDRIAASMRALVLR EAEDTQVFGDLPRPRLNTSDFQKLKRKY

TRTRPLEQKLISEEDLAANDILDYKDDDDKV

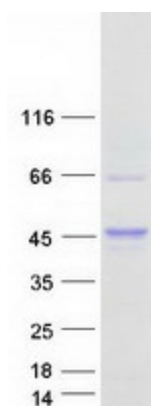
Tag:	C-Myc/DDK
Predicted MW:	27.2 kDa
Concentration:	>0.05 µg/µL as determined by microplate BCA method
Purity:	> 80% as determined by SDS-PAGE and Coomassie blue staining
Buffer:	25 mM Tris-HCl, 100 mM glycine, pH 7.3, 10% glycerol
Preparation:	Recombinant protein was captured through anti-DDK affinity column followed by conventional chromatography steps.
Note:	For testing in cell culture applications, please filter before use. Note that you may experience some loss of protein during the filtration process.
Storage:	Store at -80°C.
Stability:	Stable for 12 months from the date of receipt of the product under proper storage and handling conditions. Avoid repeated freeze-thaw cycles.
RefSeq:	<a href="#">NP_001092102</a>
Locus ID:	84335



[View online »](#)

UniProt ID:	<a href="#">Q96B36</a> , <a href="#">A0A024QZF6</a>
RefSeq Size:	2033
Cytogenetics:	19q13.33
RefSeq ORF:	768
Synonyms:	Lobe; PRAS40
Summary:	AKT1S1 is a proline-rich substrate of AKT (MIM 164730) that binds 14-3-3 protein (see YWHAH, MIM 113508) when phosphorylated (Kovacina et al., 2003 [PubMed 12524439]).[supplied by OMIM, Mar 2008]

### Product images:



Coomassie blue staining of purified AKT1S1 protein (Cat# TP311995). The protein was produced from HEK293T cells transfected with AKT1S1 cDNA clone (Cat# [RC211995]) using MegaTran 2.0 (Cat# [TT210002]).