

## Product datasheet for **TP311985L**

### Plasma Kallikrein 1B (KLKB1) (NM\_000892) Human Recombinant Protein

#### Product data:

**Product Type:** Recombinant Proteins

**Description:** Recombinant protein of human kallikrein B, plasma (Fletcher factor) 1 (KLKB1), 1 mg

**Species:** Human

**Expression Host:** HEK293T

**Expression cDNA** >RC211985 representing NM\_000892

**Clone or AA** **Red**=Cloning site **Green**=Tags(s)

**Sequence:**

MILFKQATYFISLFATVSCGCLTQLYENAFFRGGDVASMYTPNAQYQCQMRCTFHPRCLLFSFLPASSIND  
MEKRFGCFLKDSVTGTLPKVHRTGAVSGHSLKQCGHQISACHRDIYKGVDMRGNVFNVSIVSSVEECQKR  
CTNNIRCQFFSYATQTFHKAEYRNNCLLKYSPPGPTPTAIKVLNVESGFSCLKPCALSEIGCHMNIHQHLA  
FSDVDVARVLTDAFVCRITICTYHPNCLFFTFYTNVWKIESQRNVCLLKTSESSTPQENTISGYS  
LLTCKRTLPEPCHSKIYPGVDFGGEELNVTFVKGVNVCQETCTKMIRCQFFTYSLLPEDCKEEKCKCFLR  
LSMDGSPTRIAYGTOGSSGYSRLCNTGDNSVCTTKTSTRIVGGTNSSWGEWPWQVSLQVKLTAQRHLCG  
GSLIGHQWVLTAAHCFDGLPLQDVWRIYSGILNLSDITKDTPFQIKEIIHQNYKVSEGNHDIALIKLQ  
APLNYTEFQKPICLPSKGDSTIYTNWVTGWGFSKEKGEIQNILQKVNIPLVNNEECQKRYQDYKITQR  
MVCAGYKEGGKDACKGDSGGPLVCKHNGMWRLVIGITSWGEGCARREQPGVYTKVAEYMDWILEKTQSSDG  
KAQMSPA

**TRTRPLEQKLISEEDLAANDILDYKDDDDKV**

**Tag:** C-Myc/DDK

**Predicted MW:** 41.3 kDa

**Concentration:** >0.05 µg/µL as determined by microplate BCA method

**Purity:** > 80% as determined by SDS-PAGE and Coomassie blue staining

**Buffer:** 25 mM Tris-HCl, 100 mM glycine, pH 7.3, 10% glycerol

**Preparation:** Recombinant protein was captured through anti-DDK affinity column followed by conventional chromatography steps.

**Note:** For testing in cell culture applications, please filter before use. Note that you may experience some loss of protein during the filtration process.

**Storage:** Store at -80°C.



[View online »](#)

**Stability:** Stable for 12 months from the date of receipt of the product under proper storage and handling conditions. Avoid repeated freeze-thaw cycles.

**RefSeq:** [NP\\_000883](#)

**Locus ID:** 3818

**UniProt ID:** [P03952](#), [A8K9A9](#)

**RefSeq Size:** 2245

**Cytogenetics:** 4q35.2

**RefSeq ORF:** 1914

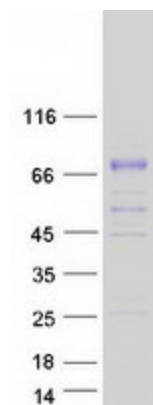
**Synonyms:** KLK3; PKK; PKKD; PPK

**Summary:** This gene encodes a glycoprotein that participates in the surface-dependent activation of blood coagulation, fibrinolysis, kinin generation and inflammation. The encoded preproprotein present in plasma as a non-covalent complex with high molecular weight kininogen undergoes proteolytic processing mediated by activated coagulation factor XII to generate a disulfide-linked, heterodimeric serine protease comprised of heavy and light chains. Certain mutations in this gene cause prekallikrein deficiency. Alternative splicing results in multiple transcript variants encoding different isoforms. [provided by RefSeq, Jan 2016]

**Protein Families:** Druggable Genome, Protease

**Protein Pathways:** Complement and coagulation cascades

### Product images:



Coomassie blue staining of purified KLKB1 protein (Cat# [TP311985]). The protein was produced from HEK293T cells transfected with KLKB1 cDNA clone (Cat# [RC211985]) using MegaTran 2.0 (Cat# [TT210002]).