

## Product datasheet for **TP311922M**

### Inhibin beta C chain (INHBC) (NM\_005538) Human Recombinant Protein

#### Product data:

Product Type:	Recombinant Proteins
Description:	Recombinant protein of human inhibin, beta C (INHBC), 100 µg
Species:	Human
Expression Host:	HEK293T
Expression cDNA Clone or AA Sequence:	>RC211922 representing NM_005538 <b>Red</b> =Cloning site <b>Green</b> =Tags(s)
	<p>MTSSLLLAFLLLAPTTVATPRAGGQCPACGGPTLELESQRELLLDLAKRSILDKLHLTQRPTLNRPVSRA ALRTALQHLHGVPQGALLEDNREQECEIISFAETGLSTINQTRLDFHFSSDRTAGDREVQQASLMFFVQL PSNTTWTLKVRVVLVLPHTNLTATQYLLEVDASGWHQLPLGPEAQAAACSQGHLELVLEGQVAQSSV ILGGAHRPFVAARVRVGGKHQIHRRGIDCQGGSRMCCRQEFFVDFREIGWHDWIIQPEGYAMNFCIGQC PLHIAGMPGIAASFHTAVLNLLKANTAAGTTGGGSCCVPTAQRPLSLLYDRDSNIVKTDIPDMVVEACG CS</p> <p><b>TRTRPLEQKLISEEDLAANDILDYKDDDDKV</b></p>
Tag:	C-Myc/DDK
Predicted MW:	36.3 kDa
Concentration:	>0.05 µg/µL as determined by microplate BCA method
Purity:	> 80% as determined by SDS-PAGE and Coomassie blue staining
Buffer:	25 mM Tris-HCl, 100 mM glycine, pH 7.3, 10% glycerol
Preparation:	Recombinant protein was captured through anti-DDK affinity column followed by conventional chromatography steps.
Note:	For testing in cell culture applications, please filter before use. Note that you may experience some loss of protein during the filtration process.
Storage:	Store at -80°C.
Stability:	Stable for 12 months from the date of receipt of the product under proper storage and handling conditions. Avoid repeated freeze-thaw cycles.
RefSeq:	<a href="#">NP_005529</a>
Locus ID:	3626



[View online »](#)

UniProt ID: [P55103](#)

RefSeq Size: 1990

Cytogenetics: 12q13.3

RefSeq ORF: 1056

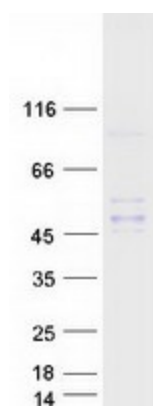
Synonyms: IHBC

**Summary:** This gene encodes a member of the TGF-beta (transforming growth factor-beta) superfamily of proteins. The encoded preproprotein is proteolytically processed to generate a subunit of homodimeric and heterodimeric activin complexes. The heterodimeric complex may function in the inhibition of activin A signaling. Transgenic mice overexpressing this gene exhibit defects in testis, liver and prostate. [provided by RefSeq, Aug 2016]

**Protein Families:** Druggable Genome, Secreted Protein

**Protein Pathways:** Cytokine-cytokine receptor interaction, TGF-beta signaling pathway

### Product images:



Coomassie blue staining of purified INHBC protein (Cat# [TP311922]). The protein was produced from HEK293T cells transfected with INHBC cDNA clone (Cat# [RC211922]) using MegaTran 2.0 (Cat# [TT210002]).